

LMOD1 Rabbit Polyclonal Antibody



CAB7087

Product Information

Size:

20uL, 50uL, 100uL, 200uL

Observed MW:

Refer to figures

Calculated MW:

63kDa/67kDa

Applications:

WB IHC

Reactivity:

Human

Protein Background

The leiomodlin 1 protein has a putative membrane-spanning region and 2 types of tandemly repeated blocks. The transcript is expressed in all tissues tested, with the highest levels in thyroid, eye muscle, skeletal muscle, and ovary. Increased expression of leiomodlin 1 may be linked to Graves' disease and thyroid-associated ophthalmopathy.

Immunogen information

Gene ID:

25802

Uniprot

P29536

Synonyms:

LMOD1; 1D; 64kD; D1; SM-LMOD; SMLMOD

Antibody Information

Recommended dilutions:

WB 1:500 - 1:2000 IHC 1:50
- 1:200

Source:

Rabbit

Isotype:

IgG

Purification:

Affinity purification

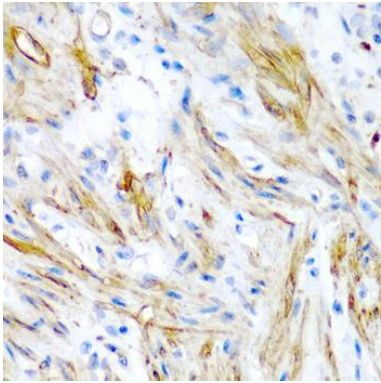
Immunogen:

Recombinant fusion protein containing a sequence corresponding to amino acids 29-187 of human LMOD1 (NP_036266.2).

Storage:

Store at -20°C. Avoid freeze / thaw cycles. Buffer: PBS with 0.02% sodium azide, 50% glycerol, pH7.3.

Product Images



Immunohistochemistry of paraffin-embedded human colon using LMOD1 antibody (CAB7087) at dilution of 1:200 (40x lens).