

CLIC4 Rabbit Polyclonal Antibody



CAB7088

Product Information

Size:

20uL, 50uL, 100uL, 200uL

Observed MW:

29kDa

Calculated MW:

28kDa

Applications:

WB IHC IF

Reactivity:

Human, Mouse, Rat

Protein Background

Chloride channels are a diverse group of proteins that regulate fundamental cellular processes including stabilization of cell membrane potential, transepithelial transport, maintenance of intracellular pH, and regulation of cell volume. Chloride intracellular channel 4 (CLIC4) protein, encoded by the CLIC4 gene, is a member of the p64 family; the gene is expressed in many tissues and exhibits a intracellular vesicular pattern in Panc-1 cells (pancreatic cancer cells).

Immunogen information

Gene ID:

25932

Uniprot

Q9Y696

Synonyms:

CLIC4; CLIC4L; H1; MTCLIC; huH1; p64H1

Antibody Information

Recommended dilutions:

WB 1:500 - 1:2000 IHC 1:50
- 1:200 IF 1:50 - 1:100

Source:

Rabbit

Isotype:

IgG

Purification:

Affinity purification

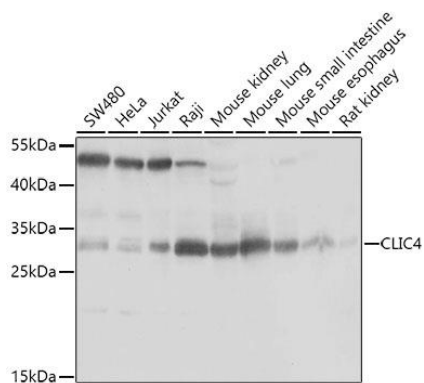
Immunogen:

Recombinant fusion protein containing a sequence corresponding to amino acids 1-253 of human CLIC4 (NP_039234.1).

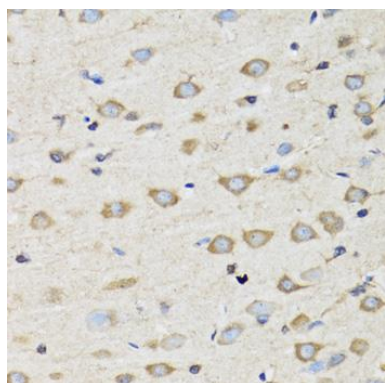
Storage:

Store at -20°C. Avoid freeze / thaw cycles. Buffer: PBS with 0.02% sodium azide, 50% glycerol, pH7.3.

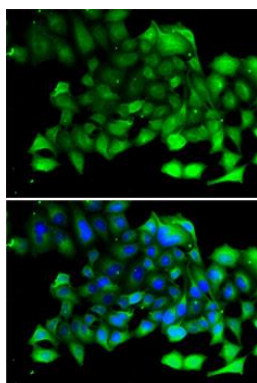
Product Images



Western blot analysis of extracts of various cell lines, using CLIC4 antibody (CAB7088) at 1:1000 dilution. Secondary antibody: HRP Goat Anti-Rabbit IgG (H+L) (CABS014) at 1:10000 dilution. Lysates/proteins: 25ug per lane. Blocking buffer: 3% nonfat dry milk in TBST. Detection: ECL Basic Kit (CABM00020). Exposure time: 2s.



Immunohistochemistry of paraffin-embedded rat brain using CLIC4 antibody (CAB7088) at dilution of 1:100 (40x lens).



Immunofluorescence analysis of A-549 cells using CLIC4 antibody (CAB7088). Blue: DAPI for nuclear staining.