

L3MBTL1 Rabbit Polyclonal Antibody



CAB7090

Product Information

Size:

20uL, 50uL, 100uL, 200uL

Observed MW:

Calculated MW:

43kDa/82kDa/83kDa/85kDa/
92kDa

Applications:

IF

Reactivity:

Human

Antibody Information

Recommended dilutions:

IF 1:50 - 1:100

Source:

Rabbit

Isotype:

IgG

Purification:

Affinity purification

Protein Background

This gene represents a polycomb group gene. The encoded protein functions to regulate gene activity, likely via chromatin modification. The encoded protein may also be necessary for mitosis. Alternatively spliced transcript variants encoding different isoforms have been identified.

Immunogen information

Gene ID:

26013

Uniprot

Q9Y468

Synonyms:

L3MBTL1; H-L(3)MBT; L3MBTL; ZC2HC3; dJ138B7.3

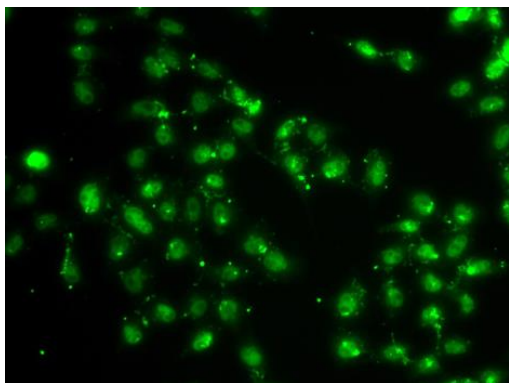
Immunogen:

Recombinant fusion protein containing a sequence corresponding to amino acids 533-772 of human L3MBTL1 (NP_056293.4).

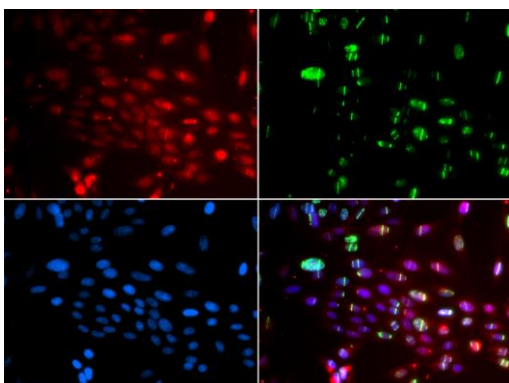
Storage:

Store at -20°C. Avoid freeze / thaw cycles. Buffer: PBS with 0.02% sodium azide, 50% glycerol, pH7.3.

Product Images



Immunofluorescence analysis of A549 cells using L3MBTL1 antibody (CAB7090).



Immunofluorescence analysis of GFP-RNF168 transgenic U2OS cells using L3MBTL1 antibody (CAB7090). Green: GFP-RNF168 fusion protein expression for DNA damage marker. Blue: DAPI for nuclear staining. RNF168(GFP) can be used to mark cells damaged by UV-A laser for they always gather around DNA damage region.