

UPF2 Rabbit Polyclonal Antibody



CAB7091

Product Information

Size:

20uL, 50uL, 100uL, 200uL

Observed MW:

148kDa

Calculated MW:

66kDa/147kDa

Applications:

WB IHC

Reactivity:

Human, Mouse

Antibody Information

Recommended dilutions:

WB 1:500 - 1:2000 IHC 1:50
- 1:200

Source:

Rabbit

Isotype:

IgG

Purification:

Affinity purification

Protein Background

This gene encodes a protein that is part of a post-splicing multiprotein complex involved in both mRNA nuclear export and mRNA surveillance. mRNA surveillance detects exported mRNAs with truncated open reading frames and initiates nonsense-mediated mRNA decay (NMD). When translation ends upstream from the last exon-exon junction, this triggers NMD to degrade mRNAs containing premature stop codons. This protein is located in the perinuclear area. It interacts with translation release factors and the proteins that are functional homologs of yeast Upf1p and Upf3p. Two splice variants have been found for this gene; both variants encode the same protein.

Immunogen information

Gene ID:

26019

Uniprot

Q9HAU5

Synonyms:

UPF2; HUPF2; RENT2; smg-3

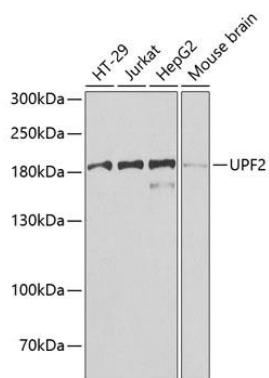
Immunogen:

Recombinant fusion protein containing a sequence corresponding to amino acids 1153-1272 of human UPF2 (NP_542166.1).

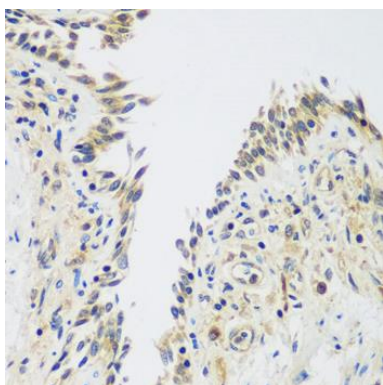
Storage:

Store at -20°C. Avoid freeze / thaw cycles. Buffer: PBS with 0.02% sodium azide, 50% glycerol, pH7.3.

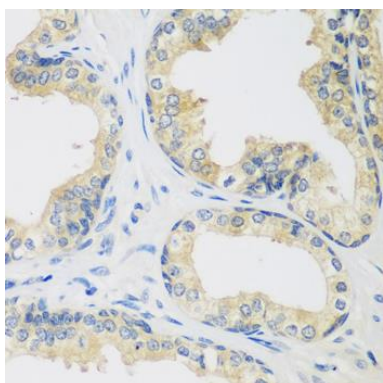
Product Images



Western blot analysis of extracts of various cell lines, using UPF2 antibody (CAB7091) at 1:1000 dilution. Secondary antibody: HRP Goat Anti-Rabbit IgG (H+L) (CABS014) at 1:10000 dilution. Lysates/proteins: 25ug per lane. Blocking buffer: 3% nonfat dry milk in TBST. Detection: ECL Basic Kit (CABM00020). Exposure time: 90s.



Immunohistochemistry of paraffin-embedded human lung using UPF2 antibody (CAB7091) at dilution of 1:100 (40x lens).



Immunohistochemistry of paraffin-embedded human prostate using UPF2 antibody (CAB7091) at dilution of 1:100 (40x lens).