

NFU1 Rabbit Polyclonal Antibody



CAB7097

Product Information

Size:

20uL, 50uL, 100uL, 200uL

Observed MW:

25-28kDa

Calculated MW:

12kDa/25kDa/28kDa

Applications:

WB IHC

Reactivity:

Human, Mouse, Rat

Protein Background

This gene encodes a protein that is localized to mitochondria and plays a critical role in iron-sulfur cluster biogenesis. The encoded protein assembles and transfers 4Fe-4S clusters to target apoproteins including succinate dehydrogenase and lipoic acid synthase. Mutations in this gene are a cause of multiple mitochondrial dysfunctions syndrome-1, and pseudogenes of this gene are located on the short arms of chromosomes 1 and 3. Alternatively spliced transcript variants encoding multiple isoforms have been observed for this gene.

Immunogen information

Gene ID:

27247

Uniprot

Q9UMS0

Synonyms:

NFU1; CGI-33; HIRIP; HIRIP5; MMDS1; NIFUC; Nfu; NifU

Antibody Information

Recommended dilutions:

WB 1:500 - 1:2000 IHC 1:50 - 1:200

Source:

Rabbit

Isotype:

IgG

Purification:

Affinity purification

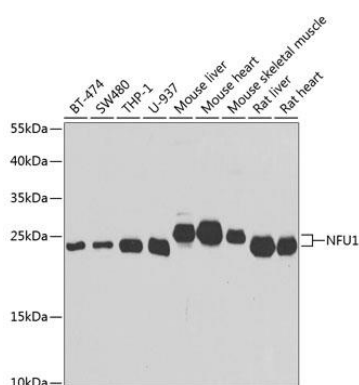
Immunogen:

Recombinant fusion protein containing a sequence corresponding to amino acids 1-230 of human NFU1 (NP_001002755.1).

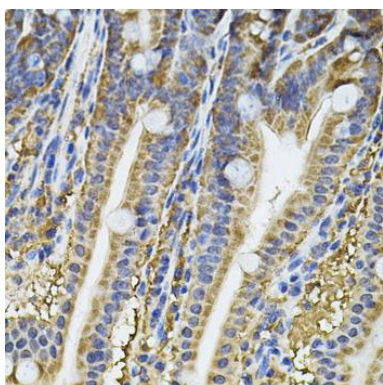
Storage:

Store at -20°C. Avoid freeze / thaw cycles. Buffer: PBS with 0.02% sodium azide, 50% glycerol, pH7.3.

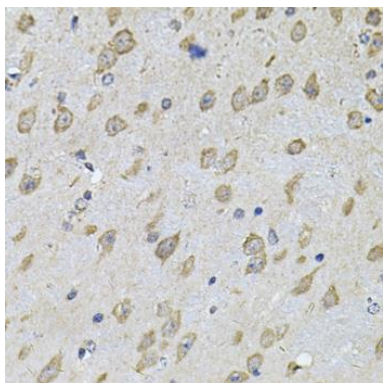
Product Images



Western blot analysis of extracts of various cell lines, using NFU1 antibody (CAB7097) at 1:1000 dilution. Secondary antibody: HRP Goat Anti-Rabbit IgG (H+L) (CABS014) at 1:10000 dilution. Lysates/proteins: 25ug per lane. Blocking buffer: 3% nonfat dry milk in TBST. Detection: ECL Basic Kit (CABM00020). Exposure time: 30s.



Immunohistochemistry of paraffin-embedded mouse intestine using NFU1 Antibody (CAB7097) at dilution of 1:100 (40x lens).



Immunohistochemistry of paraffin-embedded mouse brain using NFU1 Antibody (CAB7097) at dilution of 1:100 (40x lens).