

C16orf80 Rabbit Polyclonal Antibody



CAB7099

Product Information

Size:

20uL, 50uL, 100uL, 200uL

Observed MW:

23kDa

Calculated MW:

22kDa

Applications:

WB IF

Reactivity:

Human, Mouse, Rat

Antibody Information

Recommended dilutions:

WB 1:500 - 1:2000 IF 1:50 - 1:100

Source:

Rabbit

Isotype:

IgG

Purification:

Affinity purification

Protein Background

Immunogen information

Gene ID:

29105

Uniprot

Q9Y6A4

Synonyms:

CFAP20; C16orf80; EVORF; GTL3; fSAP23

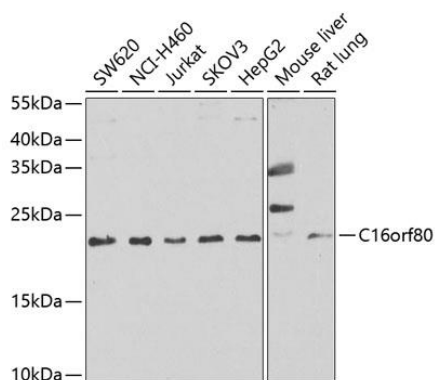
Immunogen:

Recombinant fusion protein containing a sequence corresponding to amino acids 1-193 of human C16orf80 (NP_037374.1).

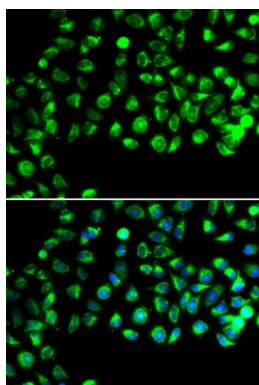
Storage:

Store at -20°C. Avoid freeze / thaw cycles. Buffer: PBS with 0.02% sodium azide, 50% glycerol, pH7.3.

Product Images



Western blot analysis of extracts of various cell lines, using C16orf80 antibody (CAB7099) at 1:1000 dilution. Secondary antibody: HRP Goat Anti-Rabbit IgG (H+L) (CABS014) at 1:10000 dilution. Lysates/proteins: 25ug per lane. Blocking buffer: 3% nonfat dry milk in TBST. Detection: ECL Enhanced Kit (CABM00021). Exposure time: 90s.



Immunofluorescence analysis of A549 cells using C16orf80 antibody (CAB7099). Blue: DAPI for nuclear staining.