

APIP Rabbit Polyclonal Antibody



CAB7102

Product Information

Size:

20uL, 50uL, 100uL, 200uL

Observed MW:

27kDa

Calculated MW:

22kDa/27kDa

Applications:

WB IHC

Reactivity:

Human, Mouse, Rat

Antibody Information

Recommended dilutions:

WB 1:500 - 1:2000 IHC 1:50
- 1:200

Source:

Rabbit

Isotype:

IgG

Purification:

Affinity purification

Protein Background

APIP is an APAF1 (MIM 602233)-interacting protein that acts as a negative regulator of ischemic/hypoxic injury (Cho et al., 2004 [PubMed 15262985]).[supplied by OMIM, Dec 2008]

Immunogen information

Gene ID:

51074

Uniprot

Q96GX9

Synonyms:

APIP; APIP2; CGI-29; CGI29; MMRP19; hAPIP

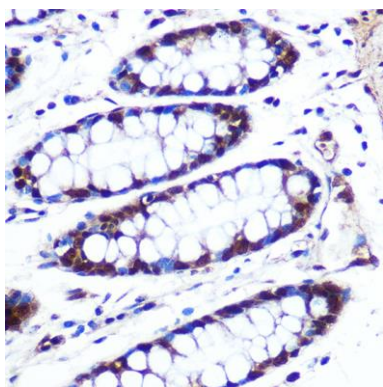
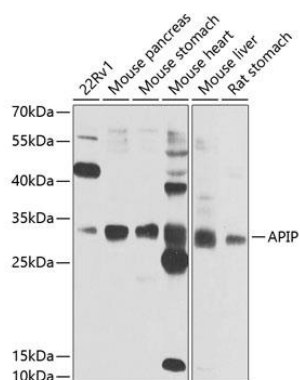
Immunogen:

Recombinant fusion protein containing a sequence corresponding to amino acids 1-242 of human APIP (NP_057041.2).

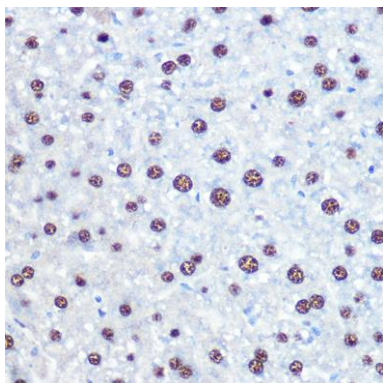
Storage:

Store at -20°C. Avoid freeze / thaw cycles. Buffer: PBS with 0.02% sodium azide, 50% glycerol, pH7.3.

Product Images



Immunohistochemistry of paraffin-embedded human colon using APIP Rabbit pAb (CAB7102) at dilution of 1:100 (40x lens).



Immunohistochemistry of paraffin-embedded mouse liver using APIP Rabbit pAb (CAB7102) at dilution of 1:100 (40x lens).