

Bif-1 Rabbit Polyclonal Antibody



CAB7104

Product Information

Size:

20uL, 50uL, 100uL, 200uL

Observed MW:

Refer to figures

Calculated MW:

29kDa/40kDa/43kDa

Applications:

WB IF

Reactivity:

Human

Antibody Information

Recommended dilutions:

WB 1:500 - 1:2000 IF 1:50 - 1:100

Source:

Rabbit

Isotype:

IgG

Purification:

Affinity purification

Protein Background

This gene encodes a SRC homology 3 domain-containing protein. The encoded protein interacts with the proapoptotic member of the Bcl-2 family, Bcl-2-associated X protein (Bax) and may be involved in regulating apoptotic signaling pathways. This protein may also be involved in maintaining mitochondrial morphology. Alternate splicing results in multiple transcript variants.

Immunogen information

Gene ID:

51100

Uniprot

Q9Y371

Synonyms:

SH3GLB1; Bif-1; CGI-61; PPP1R70; dJ612B15.2

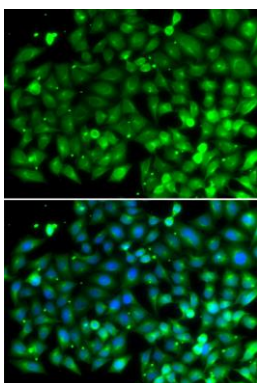
Immunogen:

Recombinant fusion protein containing a sequence corresponding to amino acids 1-365 of human Bif-1 (NP_057093.1).

Storage:

Store at -20°C. Avoid freeze / thaw cycles. Buffer: PBS with 0.02% sodium azide, 50% glycerol, pH7.3.

Product Images



Immunofluorescence analysis of A549 cells using Bif-1 antibody (CAB7104). Blue: DAPI for nuclear staining.