

NAA20 Rabbit Polyclonal Antibody



CAB7105

Product Information

Size:

20uL, 50uL, 100uL, 200uL

Observed MW:

20kDa

Calculated MW:

12kDa/20kDa

Applications:

WB IHC IF IP

Reactivity:

Human, Mouse, Rat

Protein Background

NAT5 is a component of N-acetyltransferase complex B (NatB). Human NatB performs cotranslational N(alpha)-terminal acetylation of methionine residues when they are followed by asparagine (Starheim et al., 2008 [PubMed 18570629]).[supplied by OMIM, Apr 2009]

Immunogen information

Gene ID:

51126

Uniprot

P61599

Synonyms:

NAA20; NAT3; NAT3P; NAT5; NAT5P; dJ1002M8.1

Antibody Information

Recommended dilutions:

WB 1:500 - 1:2000 IHC 1:50
- 1:200 IF 1:50 - 1:100 IP
1:50 - 1:200

Source:

Rabbit

Isotype:

IgG

Purification:

Affinity purification

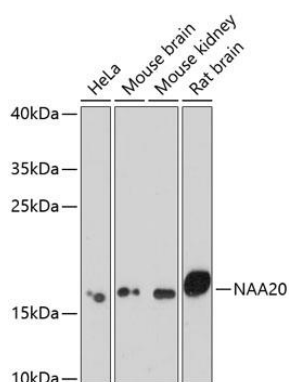
Immunogen:

Recombinant fusion protein containing a sequence corresponding to amino acids 49-178 of human NAA20 (NP_057184.1).

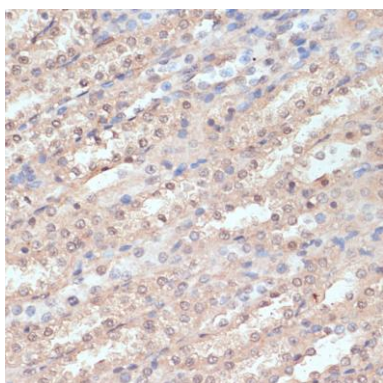
Storage:

Store at -20°C. Avoid freeze / thaw cycles. Buffer: PBS with 0.02% sodium azide, 50% glycerol, pH7.3.

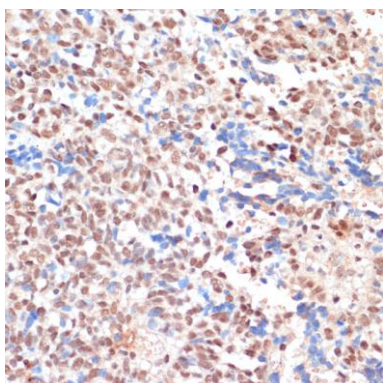
Product Images



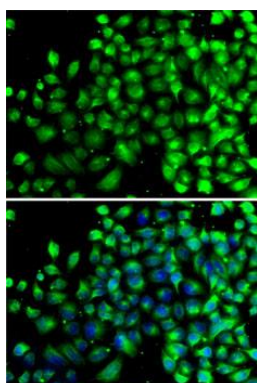
Western blot analysis of extracts of various cell lines, using NAA20 antibody (CAB7105) at 1:1000 dilution. Secondary antibody: HRP Goat Anti-Rabbit IgG (H+L) (CABS014) at 1:10000 dilution. Lysates/proteins: 25ug per lane. Blocking buffer: 3% nonfat dry milk in TBST. Detection: ECL Enhanced Kit (CABM00021). Exposure time: 90s.



Immunohistochemistry of paraffin-embedded rat kidney using NAA20 antibody (CAB7105) at dilution of 1:100 (40x lens).



Immunohistochemistry of paraffin-embedded human oophoroma using NAA20 antibody (CAB7105) at dilution of 1:100 (40x lens).



Immunofluorescence analysis of A-549 cells using NAA20 antibody (CAB7105). Blue: DAPI for nuclear staining.