

SERPINA10 Rabbit Polyclonal Antibody



CAB7106

Product Information

Size:

20uL, 50uL, 100uL, 200uL

Observed MW:

51kDa

Calculated MW:

50kDa

Applications:

WB IHC IF

Reactivity:

Human, Mouse, Rat

Protein Background

The protein encoded by this gene belongs to the serpin family. It is predominantly expressed in the liver and secreted in plasma. It inhibits the activity of coagulation factors Xa and XIa in the presence of protein Z, calcium and phospholipid. Mutations in this gene are associated with venous thrombosis. Alternatively spliced transcript variants have been found for this gene.

Immunogen information

Gene ID:

51156

Uniprot

Q9UK55

Synonyms:

SERPINA10; PZI; ZPI

Antibody Information

Recommended dilutions:

WB 1:500 - 1:2000 IHC 1:50
- 1:100 IF 1:50 - 1:100

Source:

Rabbit

Isotype:

IgG

Purification:

Affinity purification

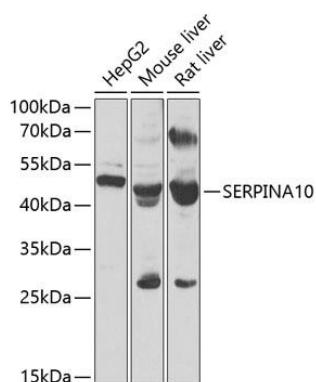
Immunogen:

Recombinant fusion protein containing a sequence corresponding to amino acids 165-444 of human SERPINA10 (NP_001094077.1).

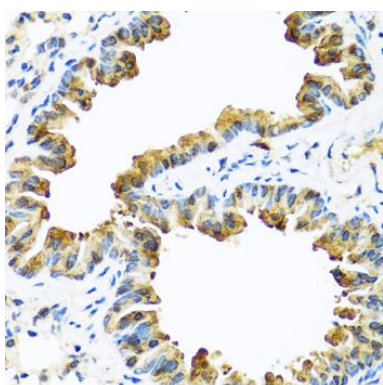
Storage:

Store at -20°C. Avoid freeze / thaw cycles. Buffer: PBS with 0.02% sodium azide, 50% glycerol, pH7.3.

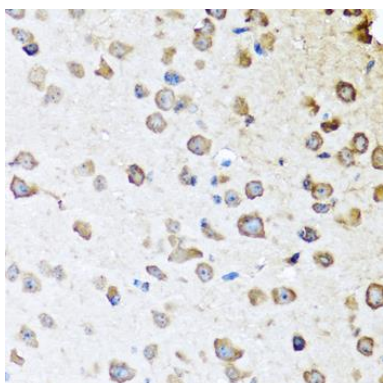
Product Images



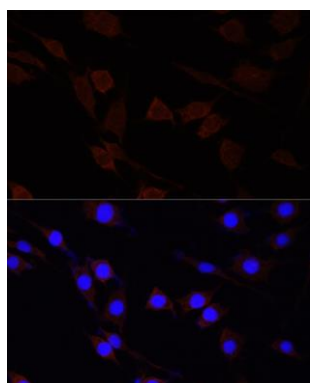
Western blot analysis of extracts of various cell lines, using SERPINA10 antibody (CAB7106) at 1:1000 dilution. Secondary antibody: HRP Goat Anti-Rabbit IgG (H+L) (CABS014) at 1:10000 dilution. Lysates/proteins: 25ug per lane. Blocking buffer: 3% nonfat dry milk in TBST. Detection: ECL Basic Kit (CABM00020). Exposure time: 120s.



Immunohistochemistry of paraffin-embedded mouse lung using SERPINA10 antibody (CAB7106) at dilution of 1:100 (40x lens).



Immunohistochemistry of paraffin-embedded mouse brain using SERPINA10 antibody (CAB7106) at dilution of 1:100 (40x lens).



Immunofluorescence analysis of PC-12 cells using SERPINA10 antibody (CAB7106) at dilution of 1:100 (40x lens). Blue: DAPI for nuclear staining.