

ACTL6B Rabbit Polyclonal Antibody



CAB7108

Product Information

Size:

20uL, 50uL, 100uL, 200uL

Observed MW:

47-55kDa

Calculated MW:

46kDa

Applications:

WB IHC IF

Reactivity:

Human, Mouse, Rat

Antibody Information

Recommended dilutions:

WB 1:500 - 1:2000 IHC 1:50
- 1:200 IF 1:50 - 1:100

Source:

Rabbit

Isotype:

IgG

Purification:

Affinity purification

Protein Background

The protein encoded by this gene is a member of a family of actin-related proteins (ARPs) which share significant amino acid sequence identity to conventional actins. Both actins and ARPs have an actin fold, which is an ATP-binding cleft, as a common feature. The ARPs are involved in diverse cellular processes, including vesicular transport, spindle orientation, nuclear migration and chromatin remodeling. This gene encodes a subunit of the BAF (BRG1/brm-associated factor) complex in mammals, which is functionally related to SWI/SNF complex in *S. cerevisiae* and *Drosophila*; the latter is thought to facilitate transcriptional activation of specific genes by antagonizing chromatin-mediated transcriptional repression. This subunit may be involved in the regulation of genes by structural modulation of their chromatin, specifically in the brain. Alternative splicing results in multiple transcript variants.

Immunogen information

Gene ID:

51412

Uniprot

O94805

Synonyms:

ACTL6B; ACTL6; BAF53B; arpNalpha

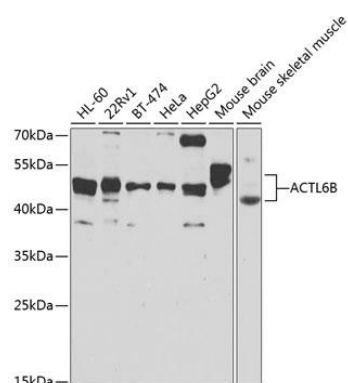
Immunogen:

Recombinant fusion protein containing a sequence corresponding to amino acids 1-280 of human ACTL6B (NP_057272.1).

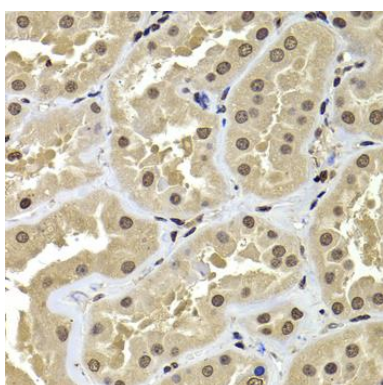
Storage:

Store at -20°C. Avoid freeze / thaw cycles. Buffer: PBS with 0.02% sodium azide, 50% glycerol, pH7.3.

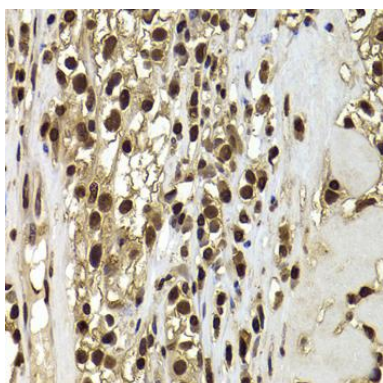
Product Images



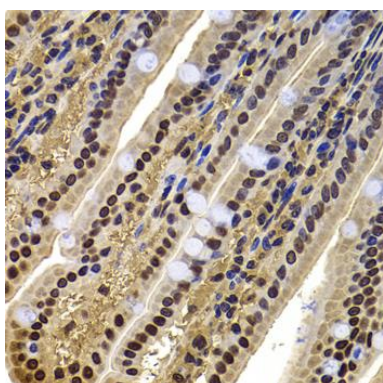
Western blot analysis of extracts of various cell lines, using ACTL6B antibody (CAB7108) at 1:1000 dilution. Secondary antibody: HRP Goat Anti-Rabbit IgG (H+L) (CABS014) at 1:10000 dilution. Lysates/proteins: 25ug per lane. Blocking buffer: 3% nonfat dry milk in TBST. Detection: ECL Basic Kit (CABM00020). Exposure time: 40s.



Immunohistochemistry of paraffin-embedded human kidney using ACTL6B antibody (CAB7108) at dilution of 1:100 (40x lens).



Immunohistochemistry of paraffin-embedded human kidney cancer using ACTL6B antibody (CAB7108) at dilution of 1:100 (40x lens).



Immunohistochemistry of paraffin-embedded mouse jejunum using ACTL6B antibody (CAB7108) at dilution of 1:100 (40x lens).