

ARFGAP1 Rabbit Polyclonal Antibody



CAB7118

Product Information

Size:

20uL, 50uL, 100uL, 200uL

Observed MW:

45kDa

Calculated MW:

31kDa/39kDa/44kDa/45kDa

Applications:

WB IHC IF

Reactivity:

Human, Mouse, Rat

Protein Background

The protein encoded by this gene is a GTPase-activating protein, which associates with the Golgi apparatus and which interacts with ADP-ribosylation factor 1. The encoded protein promotes hydrolysis of ADP-ribosylation factor 1-bound GTP and is required for the dissociation of coat proteins from Golgi-derived membranes and vesicles. Dissociation of the coat proteins is required for the fusion of these vesicles with target compartments. The activity of this protein is stimulated by phosphoinositides and inhibited by phosphatidylcholine. Alternative splicing results in multiple transcript variants.

Immunogen information

Gene ID:

55738

Uniprot

Q8N6T3

Synonyms:

ARFGAP1; ARF1GAP; HRIHFB2281

Antibody Information

Recommended dilutions:

WB 1:500 - 1:2000 IHC 1:50
- 1:200 IF 1:50 - 1:100

Source:

Rabbit

Isotype:

IgG

Purification:

Affinity purification

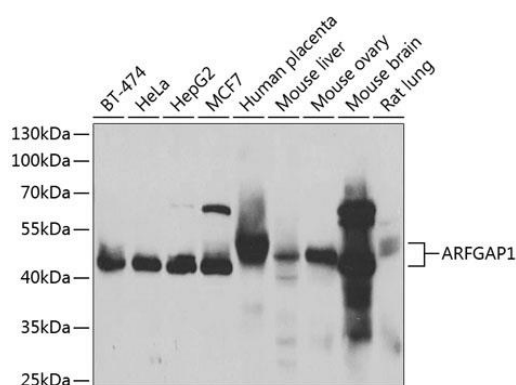
Immunogen:

Recombinant fusion protein containing a sequence corresponding to amino acids 1-220 of human ARFGAP1 (NP_001268411.1).

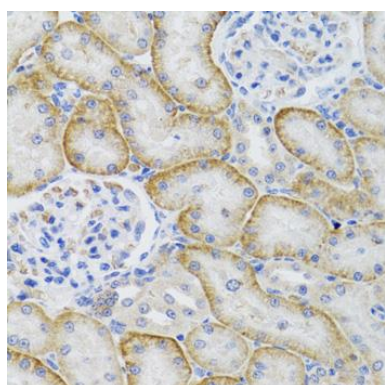
Storage:

Store at -20°C. Avoid freeze / thaw cycles. Buffer: PBS with 0.02% sodium azide, 50% glycerol, pH7.3.

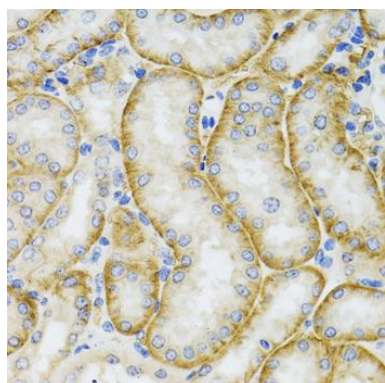
Product Images



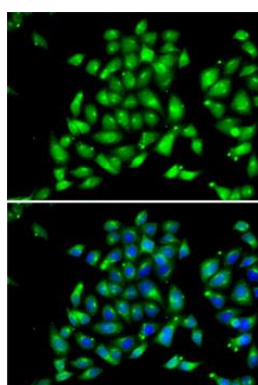
Western blot analysis of extracts of various cell lines, using ARFGAP1 antibody (CAB7118) at 1:1000 dilution. Secondary antibody: HRP Goat Anti-Rabbit IgG (H+L) (CABS014) at 1:10000 dilution. Lysates/proteins: 25ug per lane. Blocking buffer: 3% nonfat dry milk in TBST. Detection: ECL Basic Kit (CABM00020). Exposure time: 3s.



Immunohistochemistry of paraffin-embedded rat kidney using ARFGAP1 antibody (CAB7118) at dilution of 1:100 (40x lens).



Immunohistochemistry of paraffin-embedded mouse kidney using ARFGAP1 antibody (CAB7118) at dilution of 1:100 (40x lens).



Immunofluorescence analysis of MCF7 cells using ARFGAP1 antibody (CAB7118). Blue: DAPI for nuclear staining.