

ALS2 Rabbit Polyclonal Antibody



CAB7125

Product Information

Size:

20uL, 50uL, 100uL, 200uL

Observed MW:

184kDa

Calculated MW:

42kDa/86kDa/183kDa

Applications:

WB IF

Reactivity:

Human, Mouse, Rat

Antibody Information

Recommended dilutions:

WB 1:500 - 1:2000 IF 1:50 - 1:200

Source:

Rabbit

Isotype:

IgG

Purification:

Affinity purification

Protein Background

The protein encoded by this gene contains an ATS1/RCC1-like domain, a RhoGEF domain, and a vacuolar protein sorting 9 (VPS9) domain, all of which are guanine-nucleotide exchange factors that activate members of the Ras superfamily of GTPases. The protein functions as a guanine nucleotide exchange factor for the small GTPase RAB5. The protein localizes with RAB5 on early endosomal compartments, and functions as a modulator for endosomal dynamics. Mutations in this gene result in several forms of juvenile lateral sclerosis and infantile-onset ascending spastic paralysis. Multiple transcript variants encoding different isoforms have been found for this gene.

Immunogen information

Gene ID:

57679

Uniprot

Q96Q42

Synonyms:

ALS2; ALS2CR6; ALSJ; IAHSP; PLSJ; alsin

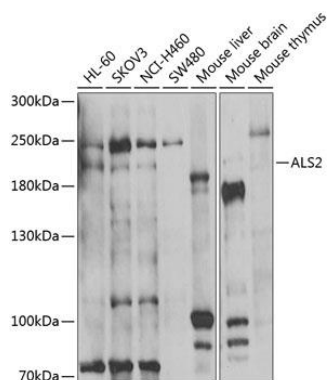
Immunogen:

Recombinant fusion protein containing a sequence corresponding to amino acids 1-280 of human ALS2 (NP_065970.2).

Storage:

Store at -20°C. Avoid freeze / thaw cycles. Buffer: PBS with 0.02% sodium azide, 50% glycerol, pH7.3.

Product Images



Western blot analysis of extracts of various cell lines, using ALS2 antibody (CAB7125) at 1:1000 dilution. Secondary antibody: HRP Goat Anti-Rabbit IgG (H+L) (CABS014) at 1:10000 dilution. Lysates/proteins: 25ug per lane. Blocking buffer: 3% nonfat dry milk in TBST. Detection: ECL Basic Kit (CABM00020). Exposure time: 90s.