

# RXFP1 Rabbit Polyclonal Antibody



CAB7127

## Product Information

### Size:

20uL, 50uL, 100uL, 200uL

### Observed MW:

87kDa

### Calculated MW:

21kDa/75kDa/81kDa/83kDa/  
86kDa

### Applications:

WB

### Reactivity:

Human, Mouse, Rat

## Antibody Information

### Recommended dilutions:

WB 1:500 - 1:2000

### Source:

Rabbit

### Isotype:

IgG

### Purification:

Affinity purification

## Protein Background

This gene encodes a member of the leucine-rich repeat-containing subgroup of the G protein-coupled 7-transmembrane receptor superfamily. The encoded protein plays a critical role in sperm motility, pregnancy and parturition as a receptor for the protein hormone relaxin. Decreased expression of this gene may play a role in endometriosis. Alternatively spliced transcript variants encoding multiple isoforms have been observed for this gene.

## Immunogen information

### Gene ID:

59350

### Uniprot

Q9HBX9

### Synonyms:

RXFP1; LGR7; RXFPR1

### Immunogen:

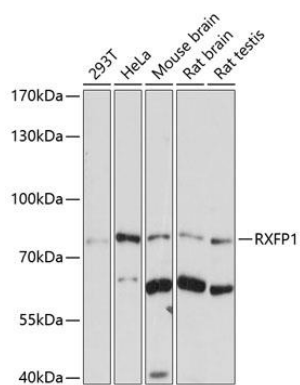
Recombinant fusion protein containing a sequence corresponding to amino acids 673-757 of human RXFP1 (NP\_067647.2).

### Storage:

Store at -20°C. Avoid freeze / thaw cycles. Buffer: PBS with 0.02% sodium azide, 50% glycerol, pH7.3.

## Product Images

---



Western blot analysis of extracts of various cell lines, using RXFP1 antibody (CAB7127) at 1:1000 dilution. Secondary antibody: HRP Goat Anti-Rabbit IgG (H+L) (CABS014) at 1:10000 dilution. Lysates/proteins: 25ug per lane. Blocking buffer: 3% nonfat dry milk in TBST. Detection: ECL Basic Kit (CABM00020). Exposure time: 30s.