

ELAC2 Rabbit Polyclonal Antibody



CAB7128

Product Information

Size:

20uL, 50uL, 100uL, 200uL

Observed MW:

105kDa

Calculated MW:

50kDa/56kDa/87kDa/92kDa

Applications:

WB IHC IF

Reactivity:

Human, Mouse, Rat

Protein Background

The protein encoded by this gene has a C-terminal domain with tRNA 3' processing endoribonuclease activity, which catalyzes the removal of the 3' trailer from precursor tRNAs. The protein also interacts with activated Smad family member 2 (Smad2) and its nuclear partner forkhead box H1 (also known as FAST-1), and reduced expression can suppress transforming growth factor-beta induced growth arrest. Mutations in this gene result in an increased risk of prostate cancer. Multiple transcript variants encoding different isoforms have been found for this gene.

Immunogen information

Gene ID:

60528

Uniprot

Q9BQ52

Synonyms:

ELAC2; COXPD17; ELC2; HPC2

Antibody Information

Recommended dilutions:

WB 1:500 - 1:2000 IHC 1:50
- 1:200 IF 1:50 - 1:100

Source:

Rabbit

Isotype:

IgG

Purification:

Affinity purification

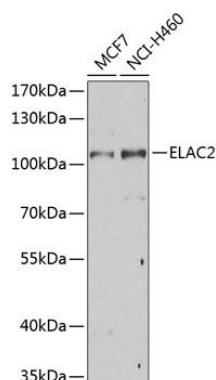
Immunogen:

Recombinant fusion protein containing a sequence corresponding to amino acids 1-270 of human ELAC2 (NP_776065.1).

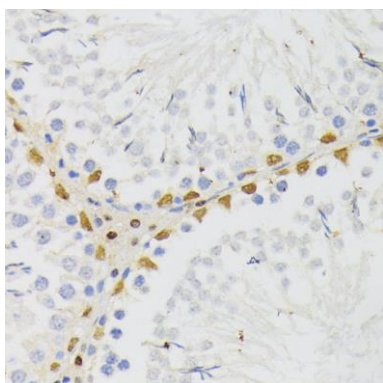
Storage:

Store at -20°C. Avoid freeze / thaw cycles. Buffer: PBS with 0.02% sodium azide, 50% glycerol, pH7.3.

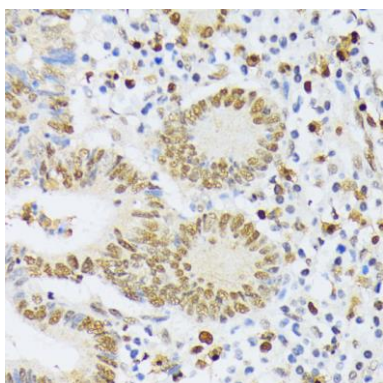
Product Images



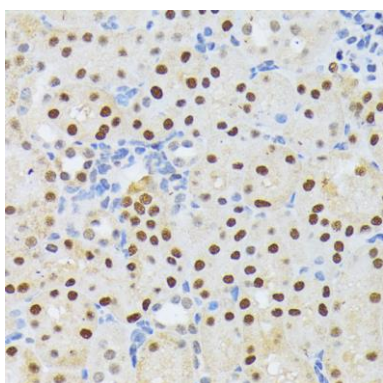
Western blot analysis of extracts of various cell lines, using ELAC2 Antibody (CAB7128) at 1:1000 dilution. Secondary antibody: HRP Goat Anti-Rabbit IgG (H+L) (CABS014) at 1:10000 dilution. Lysates/proteins: 25ug per lane. Blocking buffer: 3% nonfat dry milk in TBST. Detection: ECL Basic Kit (CABM00020). Exposure time: 30s.



Immunohistochemistry of paraffin-embedded rat testis using ELAC2 antibody (CAB7128) at dilution of 1:200 (40x lens).



Immunohistochemistry of paraffin-embedded human colon carcinoma using ELAC2 antibody (CAB7128) at dilution of 1:200 (40x lens).



Immunohistochemistry of paraffin-embedded mouse kidney using ELAC2 antibody (CAB7128) at dilution of 1:200 (40x lens).