

# THADA Rabbit Polyclonal Antibody



CAB7129

---

## Product Information

### Size:

20uL, 50uL, 100uL, 200uL

### Observed MW:

220kDa

### Calculated MW:

75kDa/100kDa/105kDa/183kDa/211kDa/219kDa

### Applications:

WB IF

### Reactivity:

Human, Mouse

## Antibody Information

### Recommended dilutions:

WB 1:500 - 1:2000 IF 1:50 - 1:100

### Source:

Rabbit

### Isotype:

IgG

### Purification:

Affinity purification

## Protein Background

This gene is the target of 2p21 chromosomal aberrations in benign thyroid adenomas. Single nucleotide polymorphisms (SNPs) in this gene may be associated with type 2 diabetes and polycystic ovary syndrome. The encoded protein is likely involved in the death receptor pathway and apoptosis.

## Immunogen information

### Gene ID:

63892

### Uniprot

Q6YHU6

### Synonyms:

THADA; ARMC13; GITA

### Immunogen:

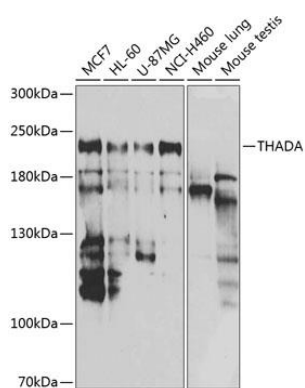
Recombinant fusion protein containing a sequence corresponding to amino acids 1684-1953 of human THADA (NP\_071348.3).

### Storage:

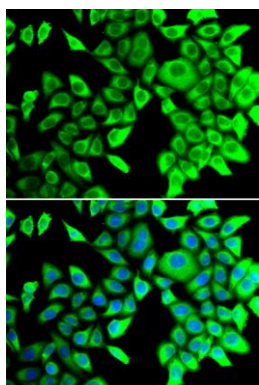
Store at -20°C. Avoid freeze / thaw cycles. Buffer: PBS with 0.02% sodium azide, 50% glycerol, pH7.3.

## Product Images

---



Western blot analysis of extracts of various cell lines, using THADA antibody (CAB7129) at 1:1000 dilution. Secondary antibody: HRP Goat Anti-Rabbit IgG (H+L) (CABS014) at 1:10000 dilution. Lysates/proteins: 25ug per lane. Blocking buffer: 3% nonfat dry milk in TBST. Detection: ECL Basic Kit (CABM00020). Exposure time: 90s.



Immunofluorescence analysis of A549 cells using THADA antibody (CAB7129). Blue: DAPI for nuclear staining.