

CSRNP1 Rabbit Polyclonal Antibody



CAB7130

Product Information

Size:

20uL, 50uL, 100uL, 200uL

Observed MW:

Refer to figures

Calculated MW:

63kDa

Applications:

WB IHC IF

Reactivity:

Human, Mouse, Rat

Antibody Information

Recommended dilutions:

WB 1:500 - 1:2000 IHC 1:50
- 1:200 IF 1:50 - 1:100

Source:

Rabbit

Isotype:

IgG

Purification:

Affinity purification

Protein Background

This gene encodes a protein that localizes to the nucleus and expression of this gene is induced in response to elevated levels of axin. The Wnt signalling pathway, which is negatively regulated by axin, is important in axis formation in early development and impaired regulation of this signalling pathway is often involved in tumors. A decreased level of expression of this gene in tumors compared to the level of expression in their corresponding normal tissues suggests that this gene product has a tumor suppressor function. Alternative splicing results in multiple transcript variants.

Immunogen information

Gene ID:

64651

Uniprot

Q96S65

Synonyms:

CSRNP1; AXUD1; CSRNP-1; FAM130B; TAIP-3; URAX1

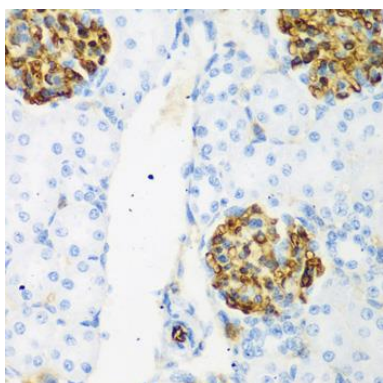
Immunogen:

Recombinant fusion protein containing a sequence corresponding to amino acids 1-200 of human CSRNP1 (NP_149016.2).

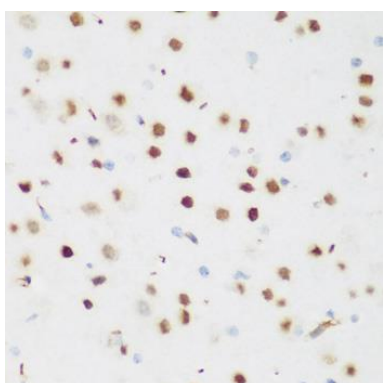
Storage:

Store at -20°C. Avoid freeze / thaw cycles. Buffer: PBS with 0.02% sodium azide, 50% glycerol, pH7.3.

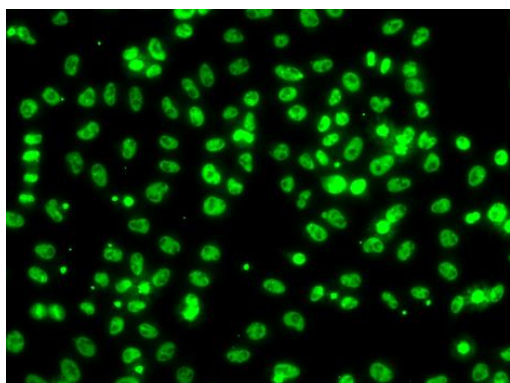
Product Images



Immunohistochemistry of paraffin-embedded rat kidney using CSRNP1 antibody (CAB7130) at dilution of 1:200 (40x lens).



Immunohistochemistry of paraffin-embedded mouse brain using CSRNP1 antibody (CAB7130) at dilution of 1:200 (40x lens).



Immunofluorescence analysis of A549 cells using CSRNP1 antibody (CAB7130).