

PINK1 Rabbit Polyclonal Antibody



CAB7131

Product Information

Size:

20uL, 50uL, 100uL, 200uL

Observed MW:

46kDa, 60kDa

Calculated MW:

30kDa/62kDa

Applications:

WB IF

Reactivity:

Human, Mouse, Rat

Protein Background

This gene encodes a serine/threonine protein kinase that localizes to mitochondria. It is thought to protect cells from stress-induced mitochondrial dysfunction. Mutations in this gene cause one form of autosomal recessive early-onset Parkinson disease.

Immunogen information

Gene ID:

65018

Uniprot

Q9BXM7

Synonyms:

PINK1; BRPK; PARK6

Antibody Information

Recommended dilutions:

WB 1:500 - 1:2000 IF 1:50 - 1:200

Source:

Rabbit

Isotype:

IgG

Purification:

Affinity purification

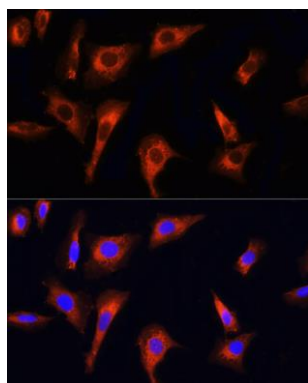
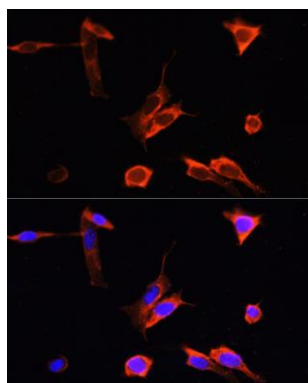
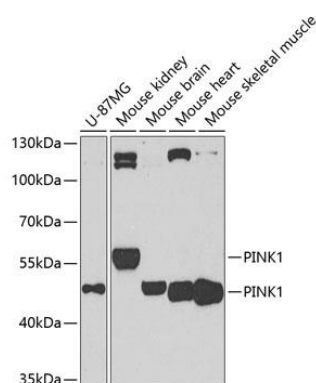
Immunogen:

Recombinant fusion protein containing a sequence corresponding to amino acids 282-581 of human PINK1 (NP_115785.1).

Storage:

Store at -20°C. Avoid freeze / thaw cycles. Buffer: PBS with 0.02% sodium azide, 50% glycerol, pH7.3.

Product Images



Western blot analysis of extracts of various cell lines, using PINK1 antibody (CAB7131) at 1:1000 dilution. Secondary antibody: HRP Goat Anti-Rabbit IgG (H+L) (CABS014) at 1:10000 dilution. Lysates/proteins: 25ug per lane. Blocking buffer: 3% nonfat dry milk in TBST. Detection: ECL Basic Kit (CABM00020). Exposure time: 90s.

Immunofluorescence analysis of NIH-3T3 cells using PINK1 Rabbit pAb (CAB7131) at dilution of 100 (40x lens). Blue: DAPI for nuclear staining.

Immunofluorescence analysis of U-2 OS cells using PINK1 Rabbit pAb (CAB7131) at dilution of 100 (40x lens). Blue: DAPI for nuclear staining.