

PTGES2 Rabbit Polyclonal Antibody



CAB7137

Product Information

Size:

20uL, 50uL, 100uL, 200uL

Observed MW:

35KDa

Calculated MW:

41kDa

Applications:

WB IHC IF

Reactivity:

Human, Mouse, Rat

Protein Background

The protein encoded by this gene is a membrane-associated prostaglandin E synthase, which catalyzes the conversion of prostaglandin H2 to prostaglandin E2. This protein also has been shown to activate the transcription regulated by a gamma-interferon-activated transcription element (GATE). Multiple transcript variants have been found for this gene.

Immunogen information

Gene ID:

80142

Uniprot

Q9H7Z7

Synonyms:

PTGES2; C9orf15; GBF-1; GBF1; PGES2; mPGES-2

Antibody Information

Recommended dilutions:

WB 1:500 - 1:2000 IHC 1:50
- 1:200 IF 1:50 - 1:100

Source:

Rabbit

Isotype:

IgG

Purification:

Affinity purification

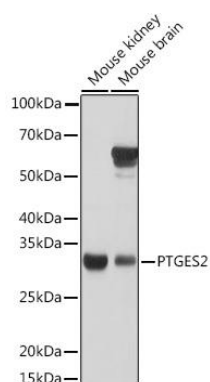
Immunogen:

Recombinant fusion protein containing a sequence corresponding to amino acids 88-377 of human PTGES2 (NP_079348.1).

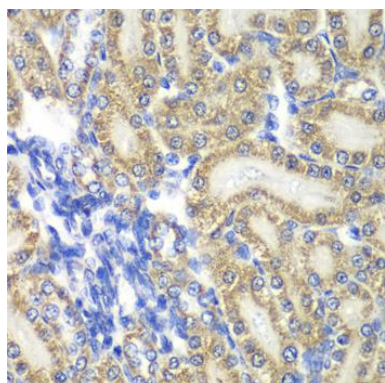
Storage:

Store at -20°C. Avoid freeze / thaw cycles. Buffer: PBS with 0.02% sodium azide, 50% glycerol, pH7.3.

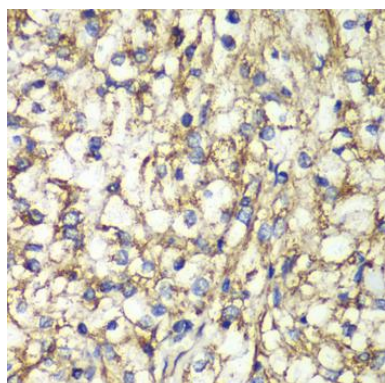
Product Images



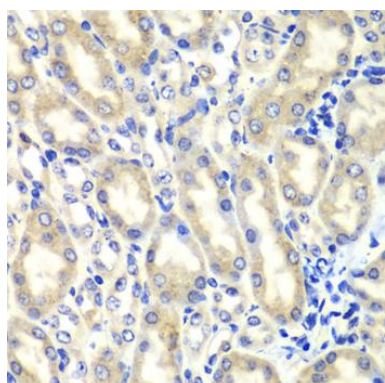
Western blot analysis of extracts of various cell lines, using PTGES2 Rabbit pAb (CAB7137) at 1:1000 dilution. Secondary antibody: HRP Goat Anti-Rabbit IgG (H+L) (CABS014) at 1:10000 dilution. Lysates/proteins: 25ug per lane. Blocking buffer: 3% nonfat dry milk in TBST. Detection: ECL Basic Kit (CABM00020). Exposure time: 5s.



Immunohistochemistry of paraffin-embedded rat kidney using PTGES2 antibody (CAB7137) at dilution of 1:100 (40x lens).



Immunohistochemistry of paraffin-embedded human kidney cancer using PTGES2 antibody (CAB7137) at dilution of 1:100 (40x lens).



Immunohistochemistry of paraffin-embedded mouse kidney using PTGES2 antibody (CAB7137) at dilution of 1:100 (40x lens).