

ATRIP Rabbit Polyclonal Antibody



CAB7139

Product Information

Size:

20uL, 50uL, 100uL, 200uL

Observed MW:

86kDa

Calculated MW:

72kDa/76kDa/83kDa/85kDa

Applications:

WB IP

Reactivity:

Human, Mouse

Antibody Information

Recommended dilutions:

WB 1:500 - 1:2000 IP 1:50 - 1:200

Source:

Rabbit

Isotype:

IgG

Purification:

Affinity purification

Protein Background

This gene encodes an essential component of the DNA damage checkpoint. The encoded protein binds to single-stranded DNA coated with replication protein A. The protein also interacts with the ataxia telangiectasia and Rad3 related protein kinase, resulting in its accumulation at intranuclear foci induced by DNA damage. Multiple transcript variants encoding different isoforms have been found for this gene.

Immunogen information

Gene ID:

84126

Uniprot

Q8WXE1

Synonyms:

ATRIP

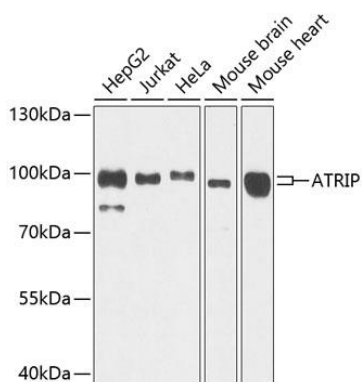
Immunogen:

Recombinant fusion protein containing a sequence corresponding to amino acids 1-260 of human ATRIP (NP_569055.1).

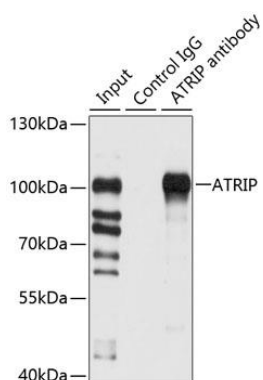
Storage:

Store at -20°C. Avoid freeze / thaw cycles. Buffer: PBS with 0.02% sodium azide, 50% glycerol, pH7.3.

Product Images



Western blot analysis of extracts of various cell lines, using ATRIP antibody (CAB7139) at 1:1000 dilution. Secondary antibody: HRP Goat Anti-Rabbit IgG (H+L) (CABS014) at 1:10000 dilution. Lysates/proteins: 25ug per lane. Blocking buffer: 3% nonfat dry milk in TBST. Detection: ECL Basic Kit (CABM00020). Exposure time: 1s.



Immunoprecipitation analysis of 200ug extracts of HeLa cells using 1ug ATRIP antibody (CAB7139). Western blot was performed from the immunoprecipitate using ATRIP antibody (CAB7139) at a dilution of 1:1000.