

# CARD11 Rabbit Polyclonal Antibody



CAB7140

## Product Information

### Size:

20uL, 50uL, 100uL, 200uL

### Observed MW:

133kDa

### Calculated MW:

133kDa

### Applications:

WB IHC IF

### Reactivity:

Human, Mouse, Rat

## Antibody Information

### Recommended dilutions:

WB 1:500 - 1:2000 IHC 1:50  
- 1:200 IF 1:50 - 1:100

### Source:

Rabbit

### Isotype:

IgG

### Purification:

Affinity purification

## Protein Background

The protein encoded by this gene belongs to the membrane-associated guanylate kinase (MAGUK) family, a class of proteins that functions as molecular scaffolds for the assembly of multiprotein complexes at specialized regions of the plasma membrane. This protein is also a member of the CARD protein family, which is defined by carrying a characteristic caspase-associated recruitment domain (CARD). This protein has a domain structure similar to that of CARD14 protein. The CARD domains of both proteins have been shown to specifically interact with BCL10, a protein known to function as a positive regulator of cell apoptosis and NF-kappaB activation. When expressed in cells, this protein activated NF-kappaB and induced the phosphorylation of BCL10.

## Immunogen information

### Gene ID:

84433

### Uniprot

Q9BXL7

### Synonyms:

CARD11; BENTA; BIMP3; CARMA1; IMD11; PPBL

### Immunogen:

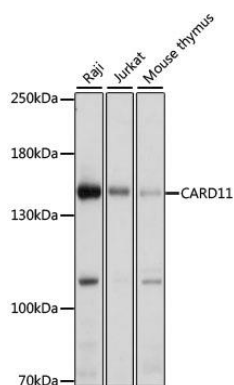
Recombinant fusion protein containing a sequence corresponding to amino acids 985-1154 of human CARD11 (NP\_115791.3).

### Storage:

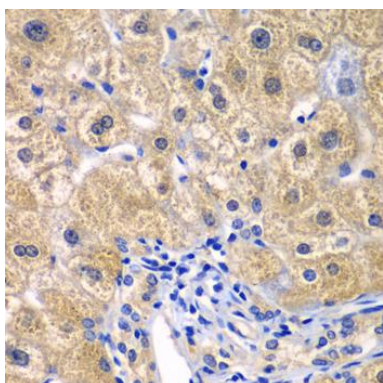
Store at -20°C. Avoid freeze / thaw cycles. Buffer: PBS with 0.02% sodium azide, 50% glycerol, pH7.3.

## Product Images

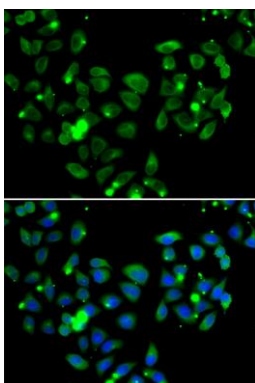
---



Western blot analysis of extracts of various cell lines, using CARD11 antibody (CAB7140) at 1:1000 dilution. Secondary antibody: HRP Goat Anti-Rabbit IgG (H+L) (CABS014) at 1:10000 dilution. Lysates/proteins: 25ug per lane. Blocking buffer: 3% nonfat dry milk in TBST. Detection: ECL Basic Kit (CABM00020). Exposure time: 10s.



Immunohistochemistry of paraffin-embedded human liver damage using CARD11 antibody (CAB7140) at dilution of 1:100 (40x lens).



Immunofluorescence analysis of A549 cells using CARD11 antibody (CAB7140). Blue: DAPI for nuclear staining.