

COMMD1 Rabbit Polyclonal Antibody



CAB7149

Product Information

Size:

20uL, 50uL, 100uL, 200uL

Observed MW:

Refer to figures

Calculated MW:

17kDa/21kDa

Applications:

IF

Reactivity:

Human, Mouse, Rat

Antibody Information

Recommended dilutions:

IF 1:50 - 1:100

Source:

Rabbit

Isotype:

IgG

Purification:

Affinity purification

Protein Background

Immunogen information

Gene ID:

150684

Uniprot

Q8N668

Synonyms:

COMMD1; C2orf5; MURR1

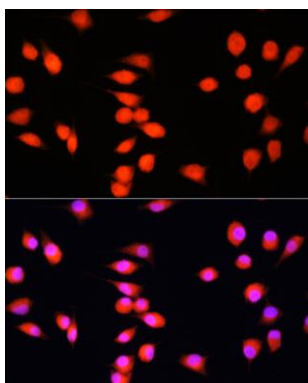
Immunogen:

Recombinant fusion protein containing a sequence corresponding to amino acids 1-190 of human COMMD1 (NP_689729.1).

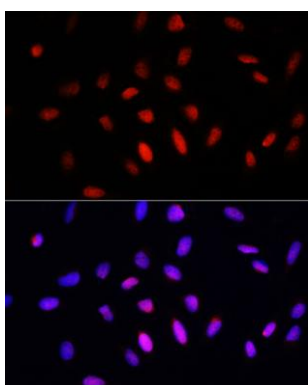
Storage:

Store at -20°C. Avoid freeze / thaw cycles. Buffer: PBS with 0.02% sodium azide, 50% glycerol, pH7.3.

Product Images



Immunofluorescence analysis of L929 cells using COMMD1 antibody (CAB7149) at dilution of 1:100. Blue: DAPI for nuclear staining.



Immunofluorescence analysis of U2OS cells using COMMD1 antibody (CAB7149) at dilution of 1:100. Blue: DAPI for nuclear staining.