

U2AF1L4 Rabbit Polyclonal Antibody



CAB7151

Product Information

Size:

20uL, 50uL, 100uL, 200uL

Observed MW:

Refer to figures

Calculated MW:

21kDa/22kDa/25kDa

Applications:

WB IF

Reactivity:

Human

Antibody Information

Recommended dilutions:

WB 1:500 - 1:2000 IF 1:50 - 1:100

Source:

Rabbit

Isotype:

IgG

Purification:

Affinity purification

Protein Background

Immunogen information

Gene ID:

199746

Uniprot

Q8WU68

Synonyms:

U2AF1L4; U2AF1-RS3; U2AF1L3; U2AF1L3V1; U2AF1RS3; U2af26

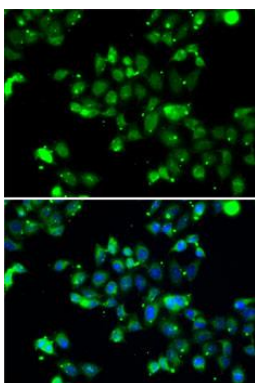
Immunogen:

Recombinant fusion protein containing a sequence corresponding to amino acids 1-202 of human U2AF1L4 (NP_659424.2).

Storage:

Store at -20°C. Avoid freeze / thaw cycles. Buffer: PBS with 0.02% sodium azide, 50% glycerol, pH7.3.

Product Images



Immunofluorescence analysis of A-549 cells using U2AF1L4 antibody (CAB7151). Blue: DAPI for nuclear staining.