

METTL20 Rabbit Polyclonal Antibody



CAB7152

Product Information

Size:

20uL, 50uL, 100uL, 200uL

Observed MW:

33kDa

Calculated MW:

29kDa

Applications:

WB IHC

Reactivity:

Mouse, Rat

Antibody Information

Recommended dilutions:

WB 1:500 - 1:2000 IHC 1:50
- 1:200

Source:

Rabbit

Isotype:

IgG

Purification:

Affinity purification

Protein Background

Immunogen information

Gene ID:

254013

Uniprot

Q8IXQ9

Synonyms:

ETFBKMT; C12orf72; ETFB-KMT; METTL20

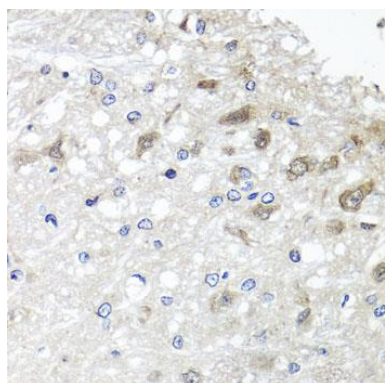
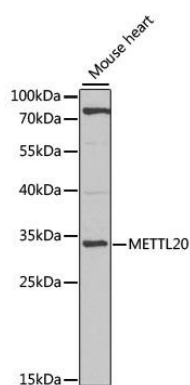
Immunogen:

Recombinant fusion protein containing a sequence corresponding to amino acids 105-262 of human METTL20 (NP_001129335.1).

Storage:

Store at -20°C. Avoid freeze / thaw cycles. Buffer: PBS with 0.02% sodium azide, 50% glycerol, pH7.3.

Product Images



Western blot analysis of extracts of mouse heart, using METTL20 antibody (CAB7152) at 1:1000 dilution. Secondary antibody: HRP Goat Anti-Rabbit IgG (H+L) (CABS014) at 1:10000 dilution. Lysates/proteins: 25ug per lane. Blocking buffer: 3% nonfat dry milk in TBST. Detection: ECL Basic Kit (CABM00020). Exposure time: 90s.

Immunohistochemistry of paraffin-embedded rat brain using METTL20 antibody (CAB7152) at dilution of 1:100 (40x lens).