

# EIF2AK4 Rabbit Polyclonal Antibody



CAB7155

---

## Product Information

### Size:

20uL, 50uL, 100uL, 200uL

### Observed MW:

220kDa

### Calculated MW:

69kDa/183kDa/186kDa

### Applications:

WB IHC

### Reactivity:

Human, Rat

## Antibody Information

### Recommended dilutions:

WB 1:500 - 1:2000 IHC 1:50  
- 1:200

### Source:

Rabbit

### Isotype:

IgG

### Purification:

Affinity purification

## Protein Background

This gene encodes a member of a family of kinases that phosphorylate the alpha subunit of eukaryotic translation initiation factor-2 (EIF2), resulting in the downregulation of protein synthesis. The encoded protein responds to amino acid deprivation by binding uncharged transfer RNAs. It may also be activated by glucose deprivation and viral infection. Mutations in this gene have been found in individuals suffering from autosomal recessive pulmonary venoocclusive-disease-2.

## Immunogen information

### Gene ID:

440275

### Uniprot

Q9P2K8

### Synonyms:

EIF2AK4; GCN2; PVOD2

### Immunogen:

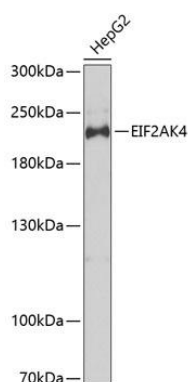
Recombinant fusion protein containing a sequence corresponding to amino acids 1-300 of human EIF2AK4 (NP\_001013725.2).

### Storage:

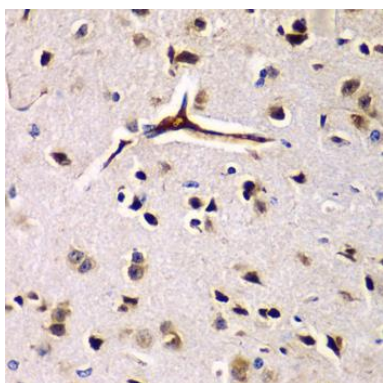
Store at -20°C. Avoid freeze / thaw cycles. Buffer: PBS with 0.02% sodium azide, 50% glycerol, pH7.3.

## Product Images

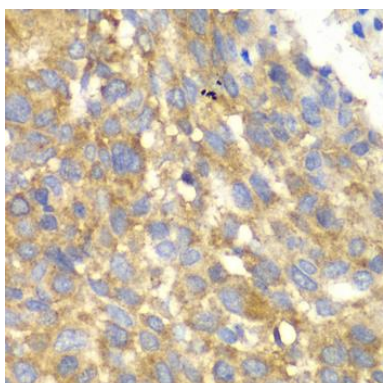
---



Western blot analysis of extracts of HepG2 cells, using EIF2AK4 antibody (CAB7155) at 1:1000 dilution. Secondary antibody: HRP Goat Anti-Rabbit IgG (H+L) (CABS014) at 1:10000 dilution. Lysates/proteins: 25ug per lane. Blocking buffer: 3% nonfat dry milk in TBST. Detection: ECL Basic Kit (CABM00020). Exposure time: 30s.



Immunohistochemistry of paraffin-embedded rat brain using EIF2AK4 antibody (CAB7155) at dilution of 1:100 (40x lens).



Immunohistochemistry of paraffin-embedded human esophageal cancer using EIF2AK4 antibody (CAB7155) at dilution of 1:100 (40x lens).