

CCL26 Rabbit Polyclonal Antibody



CAB7175

Product Information

Size:

20uL, 50uL, 100uL, 200uL

Observed MW:

11kDa

Calculated MW:

10kDa

Applications:

WB IHC

Reactivity:

Human, Mouse, Rat

Protein Background

This gene is one of two Cys-Cys (CC) cytokine genes clustered on the q arm of chromosome 7. Cytokines are a family of secreted proteins involved in immunoregulatory and inflammatory processes. The CC cytokines are proteins characterized by two adjacent cysteines. The cytokine encoded by this gene displays chemotactic activity for normal peripheral blood eosinophils and basophils. The product of this gene is one of three related chemokines that specifically activate chemokine receptor CCR3. This chemokine may contribute to the eosinophil accumulation in atopic diseases.

Immunogen information

Gene ID:

10344

Uniprot

Q9Y258

Synonyms:

CCL26; IMAC; MIP-4a; MIP-4alpha; SCYA26; TSC-1

Antibody Information

Recommended dilutions:

WB 1:500 - 1:2000 IHC 1:50
- 1:200

Source:

Rabbit

Isotype:

IgG

Purification:

Affinity purification

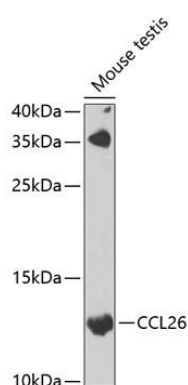
Immunogen:

Recombinant fusion protein containing a sequence corresponding to amino acids 24-94 of human CCL26 (NP_006063.1).

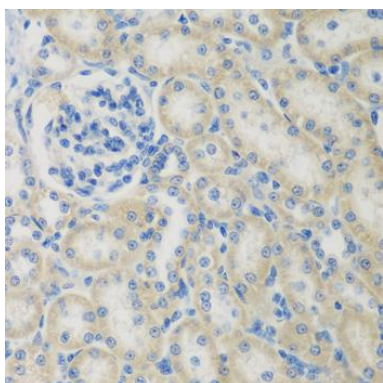
Storage:

Store at -20°C. Avoid freeze / thaw cycles. Buffer: PBS with 0.02% sodium azide, 50% glycerol, pH7.3.

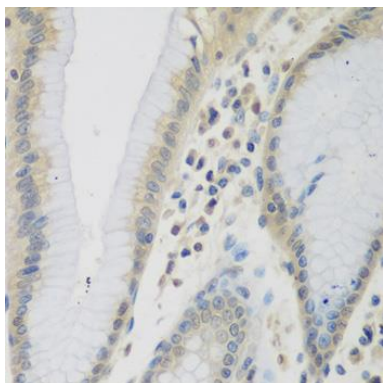
Product Images



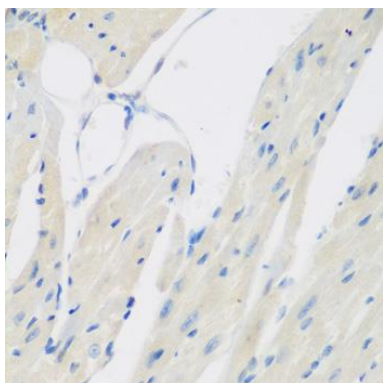
Western blot analysis of extracts of mouse testis, using CCL26 antibody (CAB7175) at 1:1000 dilution. Secondary antibody: HRP Goat Anti-Rabbit IgG (H+L) (CABS014) at 1:10000 dilution. Lysates/proteins: 25ug per lane. Blocking buffer: 3% nonfat dry milk in TBST. Detection: ECL Enhanced Kit (CABM00021). Exposure time: 90s.



Immunohistochemistry of paraffin-embedded rat kidney using CCL26 antibody (CAB7175) at dilution of 1:200 (40x lens).



Immunohistochemistry of paraffin-embedded human stomach using CCL26 antibody (CAB7175) at dilution of 1:200 (40x lens).



Immunohistochemistry of paraffin-embedded mouse heart using CCL26 antibody (CAB7175) at dilution of 1:200 (40x lens).