

ELF5 Rabbit Polyclonal Antibody



CAB7181

Product Information

Size:

20uL, 50uL, 100uL, 200uL

Observed MW:

31kDa

Calculated MW:

16kDa/18kDa/30kDa/31kDa

Applications:

WB IHC IF

Reactivity:

Human, Mouse, Rat

Antibody Information

Recommended dilutions:

WB 1:500 - 1:2000 IHC 1:50
- 1:200 IF 1:50 - 1:100

Source:

Rabbit

Isotype:

IgG

Purification:

Affinity purification

Protein Background

The protein encoded by this gene is a member of an epithelium-specific subclass of the Ets transcription factor family. In addition to its role in regulating the later stages of terminal differentiation of keratinocytes, it appears to regulate a number of epithelium-specific genes found in tissues containing glandular epithelium such as salivary gland and prostate. It has very low affinity to DNA due to its negative regulatory domain at the amino terminus. Several alternatively spliced transcript variants encoding different isoforms have been described for this gene.

Immunogen information

Gene ID:

2001

Uniprot

Q9UKW6

Synonyms:

ELF5; ESE2

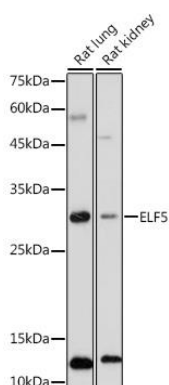
Immunogen:

Recombinant fusion protein containing a sequence corresponding to amino acids 1-170 of human ELF5 (NP_001413.1).

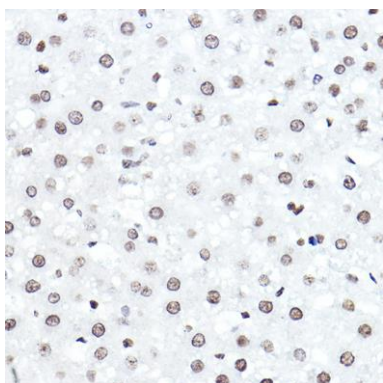
Storage:

Store at -20°C. Avoid freeze / thaw cycles. Buffer: PBS with 0.02% sodium azide, 50% glycerol, pH7.3.

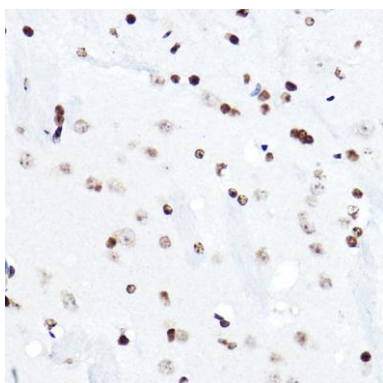
Product Images



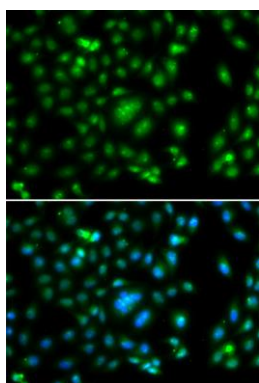
Western blot analysis of extracts of various cell lines, using ELF5 antibody (CAB7181) at 1:1000 dilution. Secondary antibody: HRP Goat Anti-Rabbit IgG (H+L) (CABS014) at 1:10000 dilution. Lysates/proteins: 25ug per lane. Blocking buffer: 3% nonfat dry milk in TBST. Detection: ECL Basic Kit (CABM00020). Exposure time: 180s.



Immunohistochemistry of paraffin-embedded rat liver using ELF5 Rabbit pAb (CAB7181) at dilution of 1:50 (40x lens).



Immunohistochemistry of paraffin-embedded mouse brain using ELF5 Rabbit pAb (CAB7181) at dilution of 1:50 (40x lens).



Immunofluorescence analysis of A549 cells using ELF5 antibody (CAB7181). Blue: DAPI for nuclear staining.