

NAP1L3 Rabbit Polyclonal Antibody



CAB7202

Product Information

Size:

20uL, 50uL, 100uL, 200uL

Observed MW:

Refer to figures

Calculated MW:

57kDa

Applications:

WB IF

Reactivity:

Human

Protein Background

This gene is intronless and encodes a member of the nucleosome assembly protein (NAP) family. This gene is linked closely to a region of genes responsible for several X-linked mental retardation syndromes.

Immunogen information

Gene ID:

4675

Uniprot

Q99457

Synonyms:

NAP1L3; MB20; NPL3

Antibody Information

Recommended dilutions:

WB 1:500 - 1:2000 IF 1:50 - 1:100

Source:

Rabbit

Isotype:

IgG

Purification:

Affinity purification

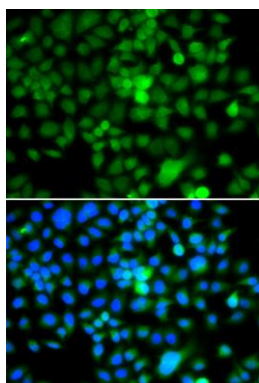
Immunogen:

Recombinant fusion protein containing a sequence corresponding to amino acids 307-506 of human NAP1L3 (NP_004529.2).

Storage:

Store at -20°C. Avoid freeze / thaw cycles. Buffer: PBS with 0.02% sodium azide, 50% glycerol, pH7.3.

Product Images



Immunofluorescence analysis of A549 cells using NAP1L3 antibody (CAB7202). Blue: DAPI for nuclear staining.