

NAT8B Rabbit Polyclonal Antibody



CAB7203

Product Information

Size:

20uL, 50uL, 100uL, 200uL

Observed MW:

25kDa

Calculated MW:

25kDa

Applications:

WB IHC

Reactivity:

Human, Mouse, Rat

Antibody Information

Recommended dilutions:

WB 1:500 - 1:2000 IHC 1:50
- 1:200

Source:

Rabbit

Isotype:

IgG

Purification:

Affinity purification

Protein Background

Immunogen information

Gene ID:

51471

Uniprot

Q9UHF3

Synonyms:

NAT8B; CML2; Hcml2; NAT8BP

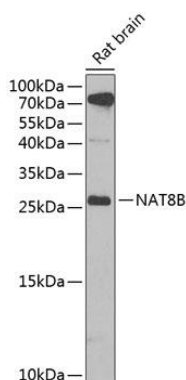
Immunogen:

Recombinant fusion protein containing a sequence corresponding to amino acids 75-165 of human NAT8B (NP_057431.2).

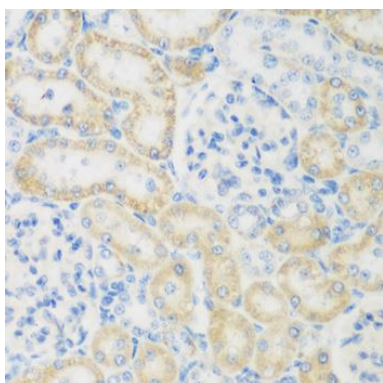
Storage:

Store at -20°C. Avoid freeze / thaw cycles. Buffer: PBS with 0.02% sodium azide, 50% glycerol, pH7.3.

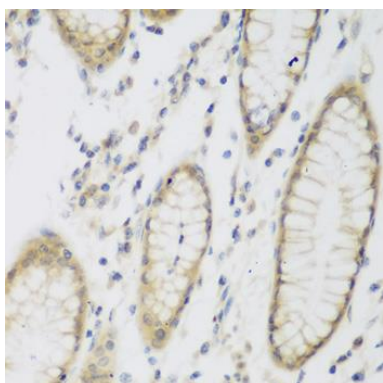
Product Images



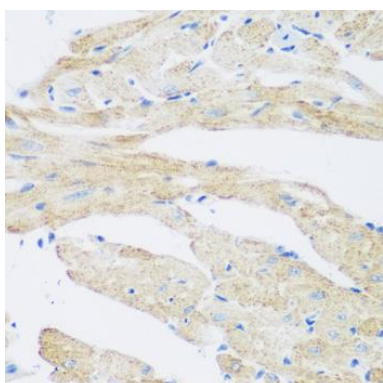
Western blot analysis of extracts of rat brain, using NAT8B antibody (CAB7203) at 1:1000 dilution. Secondary antibody: HRP Goat Anti-Rabbit IgG (H+L) (CABS014) at 1:10000 dilution. Lysates/proteins: 25ug per lane. Blocking buffer: 3% nonfat dry milk in TBST. Detection: ECL Enhanced Kit (CABM00021). Exposure time: 90s.



Immunohistochemistry of paraffin-embedded rat kidney using NAT8B antibody (CAB7203) at dilution of 1:200 (40x lens).



Immunohistochemistry of paraffin-embedded human stomach using NAT8B antibody (CAB7203) at dilution of 1:200 (40x lens).



Immunohistochemistry of paraffin-embedded mouse heart using NAT8B antibody (CAB7203) at dilution of 1:200 (40x lens).