

NAT9 Rabbit Polyclonal Antibody



CAB7204

Product Information

Size:

20uL, 50uL, 100uL, 200uL

Observed MW:

Calculated MW:

23kDa

Applications:

IF

Reactivity:

Human

Antibody Information

Recommended dilutions:

IF 1:50 - 1:100

Source:

Rabbit

Isotype:

IgG

Purification:

Affinity purification

Protein Background

Immunogen information

Gene ID:

26151

Uniprot

Q9BTE0

Synonyms:

NAT9; EBSP; hNATL

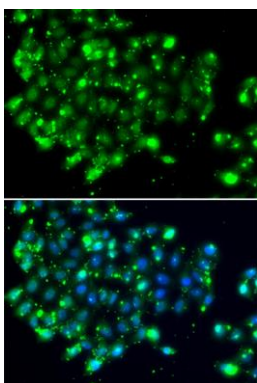
Immunogen:

Recombinant fusion protein containing a sequence corresponding to amino acids 1-207 of human NAT9 (NP_056469.2).

Storage:

Store at -20°C. Avoid freeze / thaw cycles. Buffer: PBS with 0.02% sodium azide, 50% glycerol, pH7.3.

Product Images



Immunofluorescence analysis of MCF-7 cells using NAT9 antibody (CAB7204). Blue: DAPI for nuclear staining.