

# PHIP Rabbit Polyclonal Antibody



CAB7207

---

## Product Information

### Size:

20uL, 50uL, 100uL, 200uL

### Observed MW:

250kDa

### Calculated MW:

206kDa

### Applications:

WB IHC IF

### Reactivity:

Human, Mouse

## Antibody Information

### Recommended dilutions:

WB 1:500 - 1:2000 IHC 1:50  
- 1:200 IF 1:50 - 1:100

### Source:

Rabbit

### Isotype:

IgG

### Purification:

Affinity purification

## Protein Background

### Immunogen information

#### Gene ID:

55023

#### Uniprot

Q8WWQ0

#### Synonyms:

PHIP; BRWD2; DCAF14; WDR11; ndrp

#### Immunogen:

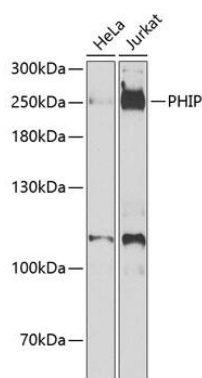
Recombinant fusion protein containing a sequence corresponding to amino acids 1542-1821 of human PHIP (NP\_060404.3).

#### Storage:

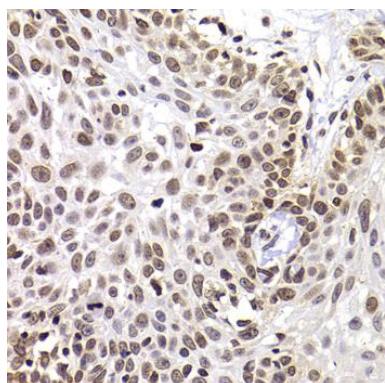
Store at -20°C. Avoid freeze / thaw cycles. Buffer: PBS with 0.02% sodium azide, 50% glycerol, pH7.3.

## Product Images

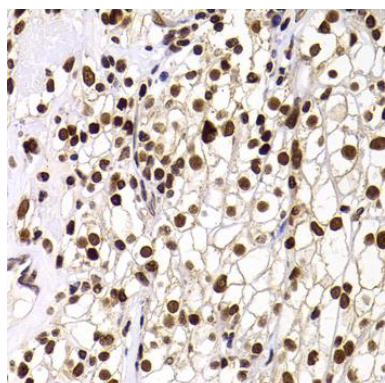
---



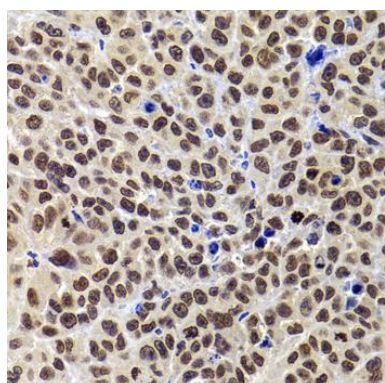
Western blot analysis of extracts of various cell lines, using PHIP antibody (CAB7207) at 1:1000 dilution. Secondary antibody: HRP Goat Anti-Rabbit IgG (H+L) (CABS014) at 1:10000 dilution. Lysates/proteins: 25ug per lane. Blocking buffer: 3% nonfat dry milk in TBST. Detection: ECL Enhanced Kit (CABM00021). Exposure time: 90s.



Immunohistochemistry of paraffin-embedded human well-differentiated squamous skin carcinoma using PHIP antibody (CAB7207) at dilution of 1:100 (40x lens).



Immunohistochemistry of paraffin-embedded human kidney cancer using PHIP antibody (CAB7207) at dilution of 1:100 (40x lens).



Immunohistochemistry of paraffin-embedded mouse tumor using PHIP antibody (CAB7207) at dilution of 1:100 (40x lens).