

RSRC1 Rabbit Polyclonal Antibody



CAB7210

Product Information

Size:

20uL, 50uL, 100uL, 200uL

Observed MW:

38kDa

Calculated MW:

31kDa/38kDa

Applications:

WB IHC IF

Reactivity:

Human, Mouse, Rat

Protein Background

This gene encodes a member of the serine and arginine rich-related protein family. The encoded protein is involved in both constitutive and alternative mRNA splicing. This gene may be associated with schizophrenia. A pseudogene of this gene is located on chromosome 9. Alternative splicing results in multiple transcript variants encoding different isoforms.

Immunogen information

Gene ID:

51319

Uniprot

Q96IZ7

Synonyms:

RSRC1; BM-011; SFRS21; SRrp53

Antibody Information

Recommended dilutions:

WB 1:500 - 1:2000 IHC 1:50
- 1:100 IF 1:50 - 1:100

Source:

Rabbit

Isotype:

IgG

Purification:

Affinity purification

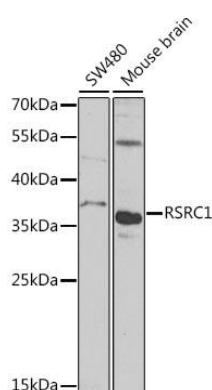
Immunogen:

Recombinant fusion protein containing a sequence corresponding to amino acids 117-276 of human RSRC1 (NP_001258763.1).

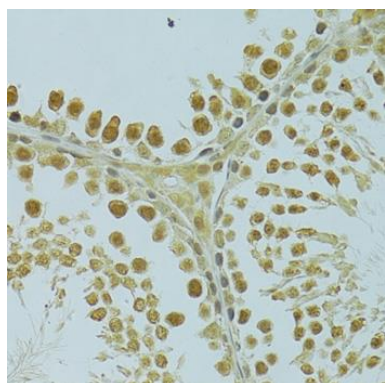
Storage:

Store at -20°C. Avoid freeze / thaw cycles. Buffer: PBS with 0.02% sodium azide, 50% glycerol, pH7.3.

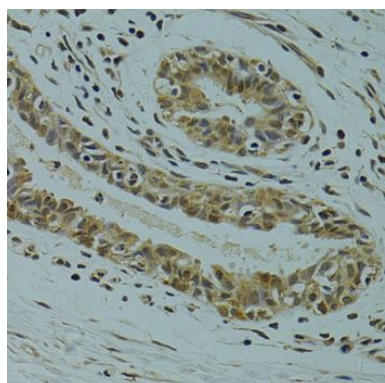
Product Images



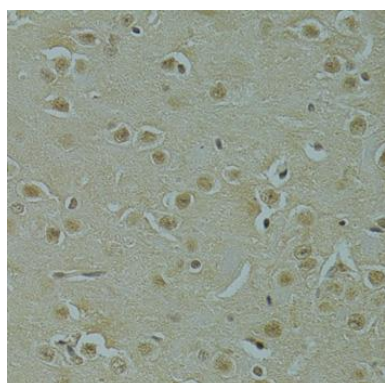
Western blot analysis of extracts of various cell lines, using RSRC1 antibody (CAB7210) at 1:1000 dilution. Secondary antibody: HRP Goat Anti-Rabbit IgG (H+L) (CABS014) at 1:10000 dilution. Lysates/proteins: 25ug per lane. Blocking buffer: 3% nonfat dry milk in TBST. Detection: ECL Basic Kit (CABM00020). Exposure time: 90s.



Immunohistochemistry of paraffin-embedded rat testis using RSRC1 antibody (CAB7210) at dilution of 1:100 (40x lens).



Immunohistochemistry of paraffin-embedded human breast cancer using RSRC1 antibody (CAB7210) at dilution of 1:100 (40x lens).



Immunohistochemistry of paraffin-embedded mouse brain using RSRC1 antibody (CAB7210) at dilution of 1:100 (40x lens).