

SETBP1 Rabbit Polyclonal Antibody



CAB7212

Product Information

Size:

20uL, 50uL, 100uL, 200uL

Observed MW:

175kDa

Calculated MW:

26kDa/175kDa

Applications:

WB IF

Reactivity:

Human, Rat

Protein Background

This gene encodes a protein which contains a several motifs including a ski homology region and a SET-binding region in addition to three nuclear localization signals. The encoded protein has been shown to bind the SET nuclear oncogene which is involved in DNA replication. Mutations in this gene are associated with Schinzel-Giedion midface retraction syndrome. Multiple transcript variants encoding different isoforms have been found for this gene.

Immunogen information

Gene ID:

26040

Uniprot

Q9Y6X0

Synonyms:

SETBP1; MRD29; SEB

Antibody Information

Recommended dilutions:

WB 1:500 - 1:2000 IF 1:50 - 1:100

Source:

Rabbit

Isotype:

IgG

Purification:

Affinity purification

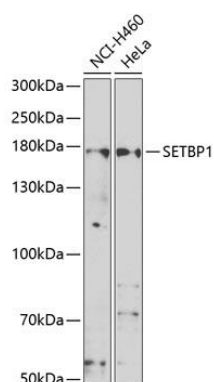
Immunogen:

Recombinant fusion protein containing a sequence corresponding to amino acids 1-242 of human SETBP1 (NP_001123582.1).

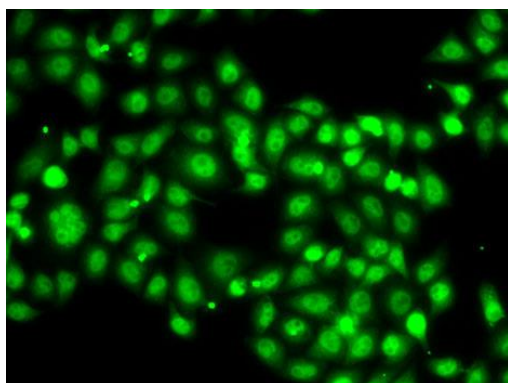
Storage:

Store at -20°C. Avoid freeze / thaw cycles. Buffer: PBS with 0.02% sodium azide, 50% glycerol, pH7.3.

Product Images



Western blot analysis of extracts of various cell lines, using SETBP1 antibody (CAB7212) at 1:1000 dilution. Secondary antibody: HRP Goat Anti-Rabbit IgG (H+L) (CABS014) at 1:10000 dilution. Lysates/proteins: 25ug per lane. Blocking buffer: 3% nonfat dry milk in TBST. Detection: ECL Basic Kit (CABM00020). Exposure time: 90s.



Immunofluorescence analysis of A-549 cells using SETBP1 antibody (CAB7212).