

SMCHD1 Rabbit Polyclonal Antibody



CAB7214

Product Information

Size:

20uL, 50uL, 100uL, 200uL

Observed MW:

246kDa

Calculated MW:

85kDa/215kDa/226kDa

Applications:

WB IF

Reactivity:

Human, Rat

Antibody Information

Recommended dilutions:

WB 1:500 - 1:2000 IF 1:50 - 1:100

Source:

Rabbit

Isotype:

IgG

Purification:

Affinity purification

Protein Background

This gene encodes a protein which contains a hinge region domain found in members of the SMC (structural maintenance of chromosomes) protein family.

Immunogen information

Gene ID:

23347

Uniprot

A6NHR9

Synonyms:

SMCHD1; BAMS; FSHD2

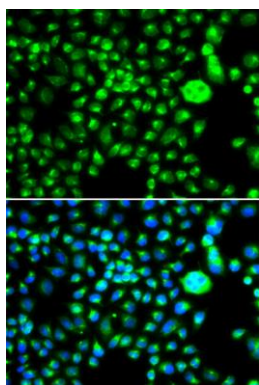
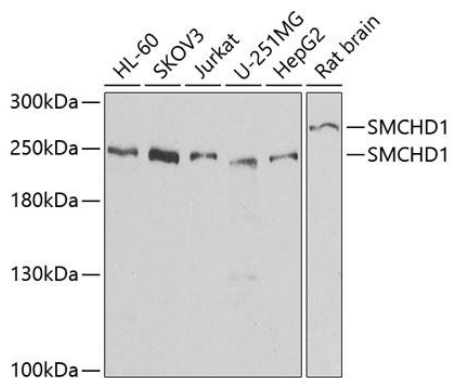
Immunogen:

Recombinant fusion protein containing a sequence corresponding to amino acids 1756-2005 of human SMCHD1 (NP_056110.2).

Storage:

Store at -20°C. Avoid freeze / thaw cycles. Buffer: PBS with 0.02% sodium azide, 50% glycerol, pH7.3.

Product Images



Western blot analysis of extracts of various cell lines, using SMCHD1 antibody (CAB7214) at 1:1000 dilution. Secondary antibody: HRP Goat Anti-Rabbit IgG (H+L) (CABS014) at 1:10000 dilution. Lysates/proteins: 25ug per lane. Blocking buffer: 3% nonfat dry milk in TBST. Detection: ECL Basic Kit (CABM00020). Exposure time: 30s.

Immunofluorescence analysis of MCF-7 cells using SMCHD1 antibody (CAB7214). Blue: DAPI for nuclear staining.