

SNRPD1 Rabbit Polyclonal Antibody



CAB7216

Product Information

Size:

20uL, 50uL, 100uL, 200uL

Observed MW:

Calculated MW:

13kDa

Applications:

IF

Reactivity:

Human

Antibody Information

Recommended dilutions:

IF 1:50 - 1:100

Source:

Rabbit

Isotype:

IgG

Purification:

Affinity purification

Protein Background

This gene encodes a small nuclear ribonucleoprotein that belongs to the SNRNP core protein family. The protein may act as a charged protein scaffold to promote SNRNP assembly or strengthen SNRNP-SNRNP interactions through nonspecific electrostatic contacts with RNA. Two transcript variants encoding different isoforms have been found for this gene.

Immunogen information

Gene ID:

6632

Uniprot

P62314

Synonyms:

SNRPD1; HsT2456; SMD1; SNRPD; Sm-D1

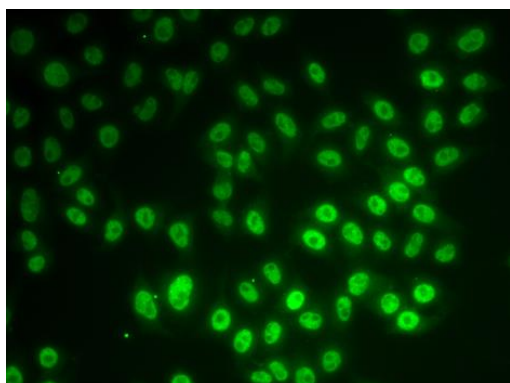
Immunogen:

Recombinant fusion protein containing a sequence corresponding to amino acids 1-119 of human SNRPD1 (NP_008869.1).

Storage:

Store at -20°C. Avoid freeze / thaw cycles. Buffer: PBS with 0.02% sodium azide, 50% glycerol, pH7.3.

Product Images



Immunofluorescence analysis of MCF-7 cells using SNRPD1 antibody (CAB7216).