

TOB2 Rabbit Polyclonal Antibody



CAB7223

Product Information

Size:

20uL, 50uL, 100uL, 200uL

Observed MW:

37kDa

Calculated MW:

27kDa/36kDa

Applications:

WB IHC IF

Reactivity:

Human, Mouse, Rat

Antibody Information

Recommended dilutions:

WB 1:500 - 1:2000 IHC

1:100 - 1:200 IF 1:50 -

1:200

Source:

Rabbit

Isotype:

IgG

Purification:

Affinity purification

Protein Background

Immunogen information

Gene ID:

10766

Uniprot

Q14106

Synonyms:

TOB2; APRO5; TOB4; TOBL; TROB2

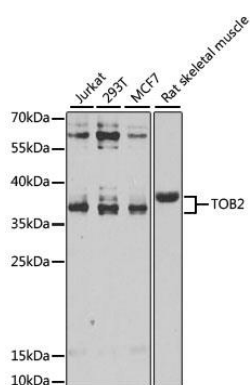
Immunogen:

Recombinant fusion protein containing a sequence corresponding to amino acids 1-70 of human TOB2 (NP_057356.1).

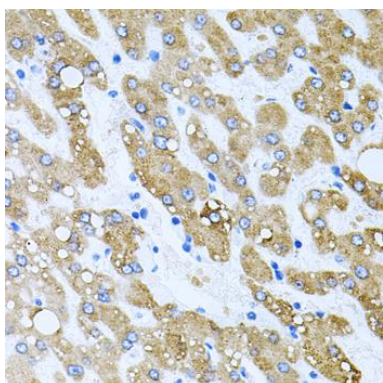
Storage:

Store at -20°C. Avoid freeze / thaw cycles. Buffer: PBS with 0.02% sodium azide, 50% glycerol, pH7.3.

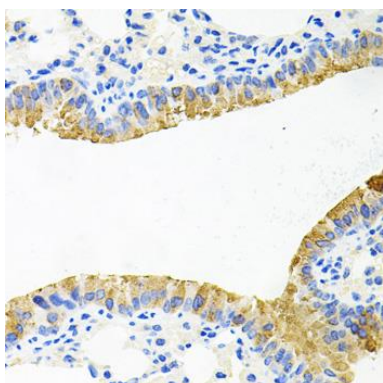
Product Images



Western blot analysis of extracts of various cell lines, using TOB2 antibody (CAB7223) at 1:1000 dilution. Secondary antibody: HRP Goat Anti-Rabbit IgG (H+L) (CABS014) at 1:10000 dilution. Lysates/proteins: 25ug per lane. Blocking buffer: 3% nonfat dry milk in TBST. Detection: ECL Enhanced Kit (CABM00021). Exposure time: 30s.



Immunohistochemistry of paraffin-embedded human liver damage using TOB2 antibody (CAB7223) at dilution of 1:100 (40x lens).



Immunohistochemistry of paraffin-embedded mouse lung using TOB2 antibody (CAB7223) at dilution of 1:100 (40x lens).