

UBE2Z Rabbit Polyclonal Antibody



CAB7225

Product Information

Size:

20uL, 50uL, 100uL, 200uL

Observed MW:

25kDa/38kDa

Calculated MW:

28kDa/38kDa

Applications:

WB IHC IF

Reactivity:

Human, Mouse

Antibody Information

Recommended dilutions:

WB 1:500 - 1:2000 IHC 1:50
- 1:200 IF 1:50 - 1:100

Source:

Rabbit

Isotype:

IgG

Purification:

Affinity purification

Protein Background

This gene encodes an enzyme which ubiquitinates proteins which participate in signaling pathways and apoptosis.

Immunogen information

Gene ID:

65264

Uniprot

Q9H832

Synonyms:

UBE2Z; HOYS7; USE1

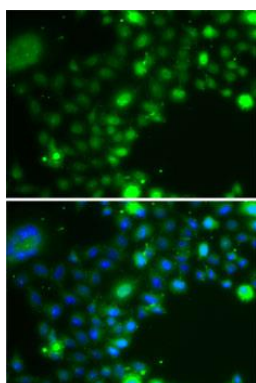
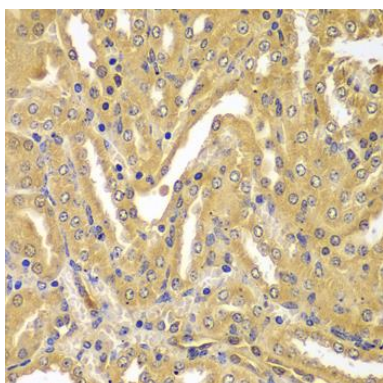
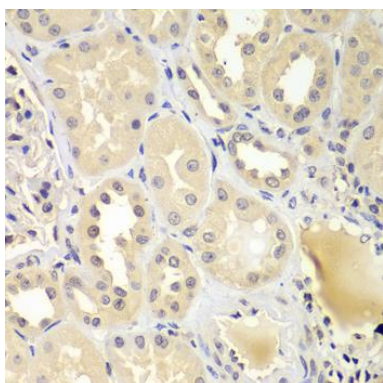
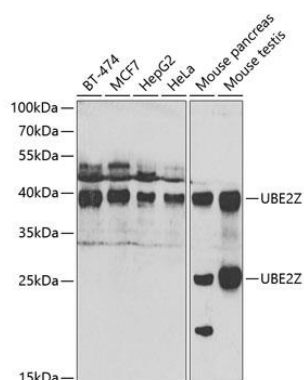
Immunogen:

Recombinant fusion protein containing a sequence corresponding to amino acids 115-354 of human UBE2Z (NP_075567.2).

Storage:

Store at -20°C. Avoid freeze / thaw cycles. Buffer: PBS with 0.02% sodium azide, 50% glycerol, pH7.3.

Product Images



Western blot analysis of extracts of various cell lines, using UBE2Z antibody (CAB7225) at 1:1000 dilution. Secondary antibody: HRP Goat Anti-Rabbit IgG (H+L) (CABS014) at 1:10000 dilution. Lysates/proteins: 25ug per lane. Blocking buffer: 3% nonfat dry milk in TBST. Detection: ECL Basic Kit (CABM00020). Exposure time: 90s.

Immunohistochemistry of paraffin-embedded human kidney using UBE2Z antibody (CAB7225) at dilution of 1:100 (40x lens).

Immunohistochemistry of paraffin-embedded mouse kidney using UBE2Z antibody (CAB7225) at dilution of 1:100 (40x lens).

Immunofluorescence analysis of A-549 cells using UBE2Z antibody (CAB7225). Blue: DAPI for nuclear staining.