

# SLC35A2 Rabbit Polyclonal Antibody



CAB7233

---

## Product Information

### Size:

20uL, 50uL, 100uL, 200uL

### Observed MW:

Refer to figures

### Calculated MW:

25kDa/34kDa/41kDa/44kDa

### Applications:

IF

### Reactivity:

Human

## Antibody Information

### Recommended dilutions:

IF 1:50 - 1:200

### Source:

Rabbit

### Isotype:

IgG

### Purification:

Affinity purification

## Protein Background

This gene encodes a member of the nucleotide-sugar transporter family. The encoded protein is a multi-pass membrane protein. It transports UDP-galactose from the cytosol into Golgi vesicles, where it serves as a glycosyl donor for the generation of glycans. Mutations in this gene cause congenital disorder of glycosylation type II<sub>m</sub> (CDG2M). Multiple alternatively spliced transcript variants encoding distinct isoforms have been found for this gene.

## Immunogen information

### Gene ID:

7355

### Uniprot

P78381

### Synonyms:

SLC35A2; CDG2M; CDGX; UDP-Gal-Tr; UGALT; UGAT; UGT; UGT1; UGT2; UGTL

### Immunogen:

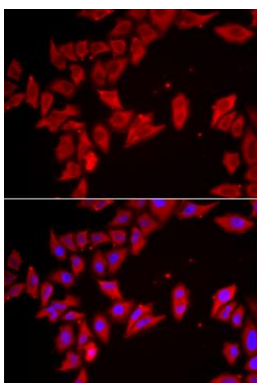
Recombinant fusion protein containing a sequence corresponding to amino acids 1-242 of human SLC35A2 (NP\_001027460.1).

### Storage:

Store at -20°C. Avoid freeze / thaw cycles. Buffer: PBS with 0.02% sodium azide, 50% glycerol, pH7.3.

## Product Images

---



Immunofluorescence analysis of HeLa cells using SLC35A2 antibody (CAB7233). Blue: DAPI for nuclear staining.