

alpha smooth muscle actin Rabbit Polyclonal Antibody

CAB7248



Product Information

Size:

20uL, 50uL, 100uL, 200uL

Observed MW:

42kDa

Calculated MW:

42kDa

Applications:

WB IHC IF

Reactivity:

Human, Mouse, Rat

Protein Background

The protein encoded by this gene belongs to the actin family of proteins, which are highly conserved proteins that play a role in cell motility, structure and integrity. Alpha, beta and gamma actin isoforms have been identified, with alpha actins being a major constituent of the contractile apparatus, while beta and gamma actins are involved in the regulation of cell motility. This actin is an alpha actin that is found in skeletal muscle. Defects in this gene cause aortic aneurysm familial thoracic type 6. Multiple alternatively spliced variants, encoding the same protein, have been identified.

Immunogen information

Gene ID:

59

Uniprot

P62736

Synonyms:

AAT6; ACTSA; MYMY5; ACTA2; actin

Antibody Information

Recommended dilutions:

WB 1:500 - 1:2000 IHC 1:50
- 1:200 IF 1:50 - 1:200

Source:

Rabbit

Isotype:

IgG

Purification:

Affinity purification

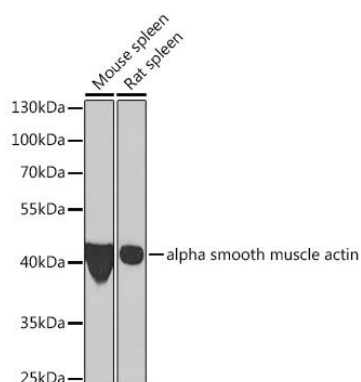
Immunogen:

Recombinant fusion protein containing a sequence corresponding to amino acids 1-377 of human alpha smooth muscle actin (NP_001135417.1).

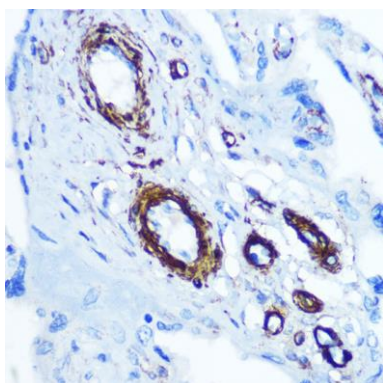
Storage:

Store at -20°C. Avoid freeze / thaw cycles. Buffer: PBS with 0.02% sodium azide, 50% glycerol, pH7.3.

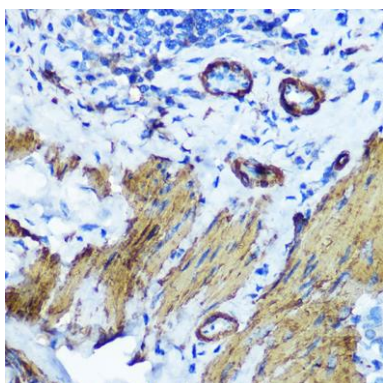
Product Images



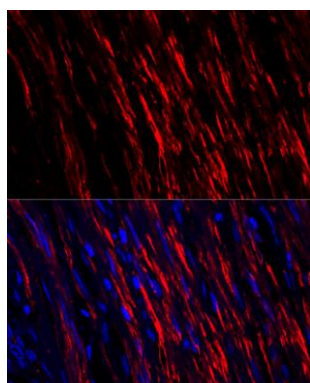
Western blot analysis of extracts of various cell lines, using alpha smooth muscle actin antibody (CAB7248) at 1:1000 dilution. Secondary antibody: HRP Goat Anti-Rabbit IgG (H+L) (CABS014) at 1:10000 dilution. Lysates/proteins: 25ug per lane. Blocking buffer: 3% nonfat dry milk in TBST. Detection: ECL Enhanced Kit (CABM00021). Exposure time: 60s.



Immunohistochemistry of paraffin-embedded Human placenta using alpha smooth muscle actin antibody (CAB7248) at dilution of 1:100 (40x lens).



Immunohistochemistry of paraffin-embedded Rat lung using alpha smooth muscle actin antibody (CAB7248) at dilution of 1:100 (40x lens).



Confocal immunofluorescence analysis of human colon carcinoma using alpha smooth muscle actin Polyclonal Antibody (CAB7248) at dilution of 1:100. Blue: DAPI for nuclear staining.