

Acetyl-Histone H4-K8 Rabbit Polyclonal Antibody



CAB7258

Product Information

Size:

20uL, 50uL, 100uL, 200uL

Observed MW:

11kDa

Calculated MW:

11kDa

Applications:

WB IHC IF IP ChIP ChIPseq

Reactivity:

Human, Mouse, Rat, Other
(Wide Range)

Antibody Information

Recommended dilutions:

WB 1:1000 - 1:3000 IHC
1:200 - 1:500 IF 1:500 -
1:1000 IP 1:200 - 1:500
ChIP 1:20 - 1:50 ChIPseq
1:20 - 1:50

Source:

Rabbit

Isotype:

IgG

Purification:

Affinity purification

Protein Background

Histones are basic nuclear proteins that are responsible for the nucleosome structure of the chromosomal fiber in eukaryotes. This structure consists of approximately 146 bp of DNA wrapped around a nucleosome, an octamer composed of pairs of each of the four core histones (H2A, H2B, H3, and H4). The chromatin fiber is further compacted through the interaction of a linker histone, H1, with the DNA between the nucleosomes to form higher order chromatin structures. This gene is intronless and encodes a replication-dependent histone that is a member of the histone H4 family. Transcripts from this gene lack polyA tails; instead, they contain a palindromic termination element. This gene is found in a histone cluster on chromosome 1. This gene is one of four histone genes in the cluster that are duplicated; this record represents the centromeric copy.

Immunogen information

Gene ID:

8370

Uniprot

P62805

Synonyms:

FO108; H4; H4/n; H4F2; H4FN; HIST2H4; Histone H4; HIST1H4A;
HIST2H4A

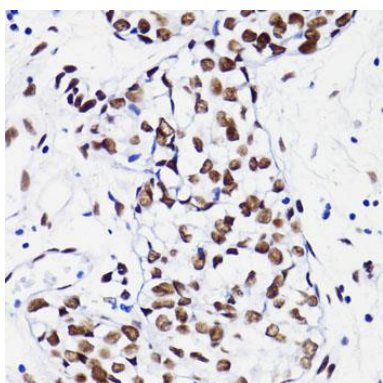
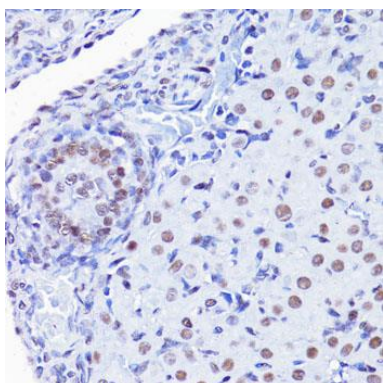
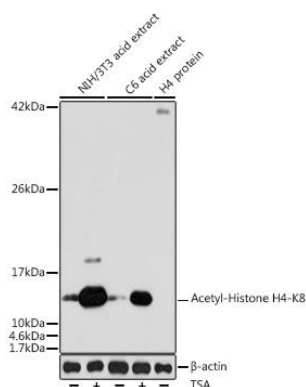
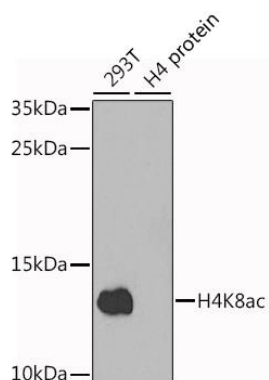
Immunogen:

A synthetic peptide of human Acetyl-Histone H4-K8

Storage:

Store at -20°C. Avoid freeze / thaw cycles. Buffer: PBS with 0.02% sodium azide, 50% glycerol, pH7.3.

Product Images



Western blot analysis of extracts of various cell lines, using Acetyl-Histone H4-K8 antibody (CAB7258) at 1:1000 dilution. Secondary antibody: HRP Goat Anti-Rabbit IgG (H+L) (CABS014) at 1:10000 dilution. Lysates/proteins: 25ug per lane. Blocking buffer: 3% nonfat dry milk in TBST. Detection: ECL Enhanced Kit (CABM00021). Exposure time: 90s.

Western blot analysis of extracts of various cell lines, using Acetyl-Histone H4-K8 antibody (CAB7258) at 1:1000 dilution. NIH/3T3 cells and C6 cells were treated by TSA (1 uM) at 37°C for 18 hours. Secondary antibody: HRP Goat Anti-Rabbit IgG (H+L) (CABS014) at 1:10000 dilution. Lysates/proteins: 25ug per lane. Blocking buffer: 3% nonfat dry milk in TBST. Detection: ECL Basic Kit (CABM00020). Exposure time: 30s.

Immunohistochemistry of paraffin-embedded rat ovary using H4K8ac antibody (CAB7258) at dilution of 1:100 (40x lens).

Immunohistochemistry of paraffin-embedded human breast using H4K8ac antibody (CAB7258) at dilution of 1:100 (40x lens).