

BLVRB Rabbit Polyclonal Antibody



CAB7260

Product Information

Size:

20uL, 50uL, 100uL, 200uL

Observed MW:

22KDa

Calculated MW:

22kDa

Applications:

WB IHC

Reactivity:

Human, Mouse, Rat

Antibody Information

Recommended dilutions:

WB 1:500 - 1:2000 IHC 1:50
- 1:100

Source:

Rabbit

Isotype:

IgG

Purification:

Affinity purification

Protein Background

The final step in heme metabolism in mammals is catalyzed by the cytosolic biliverdin reductase enzymes A and B (EC 1.3.1.24).[supplied by OMIM, Jul 2009]

Immunogen information

Gene ID:

645

Uniprot

P30043

Synonyms:

BLVRB; BVRB; FLR; HEL-S-10; SDR43U1

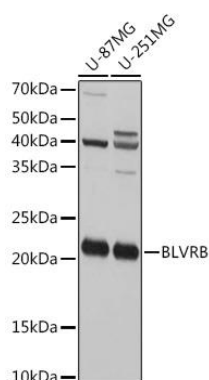
Immunogen:

Recombinant fusion protein containing a sequence corresponding to amino acids 1-206 of human BLVRB (NP_000704.1).

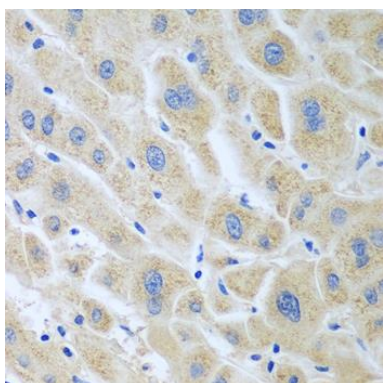
Storage:

Store at -20°C. Avoid freeze / thaw cycles. Buffer: PBS with 0.02% sodium azide, 50% glycerol, pH7.3.

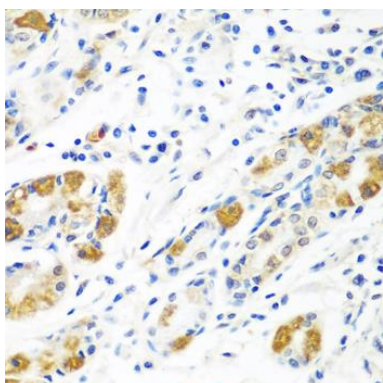
Product Images



Western blot analysis of extracts of various cell lines, using BLVRB Rabbit pAb (CAB7260) at 1:1000 dilution. Secondary antibody: HRP Goat Anti-Rabbit IgG (H+L) (CABS014) at 1:10000 dilution. Lysates/proteins: 25ug per lane. Blocking buffer: 3% nonfat dry milk in TBST. Detection: ECL Basic Kit (CABM00020). Exposure time: 30s.



Immunohistochemistry of paraffin-embedded human liver cancer using BLVRB antibody (CAB7260) at dilution of 1:100 (40x lens).



Immunohistochemistry of paraffin-embedded human stomach using BLVRB antibody (CAB7260) at dilution of 1:100 (40x lens).