

EGR1 Rabbit Polyclonal Antibody



CAB7266

Product Information

Size:

20uL, 50uL, 100uL

Observed MW:

51kDa

Calculated MW:

57kDa

Applications:

WB IHC

Reactivity:

Human, Mouse, Rat

Protein Background

The protein encoded by this gene belongs to the EGR family of C2H2-type zinc-finger proteins. It is a nuclear protein and functions as a transcriptional regulator. The products of target genes it activates are required for differentiation and mitogenesis. Studies suggest this is a cancer suppressor gene.

Immunogen information

Gene ID:

1958

Uniprot

P18146

Synonyms:

EGR1; AT225; G0S30; KROX-24; NGFI-A; TIS8; ZIF-268; ZNF225

Antibody Information

Recommended dilutions:

WB 1:200 - 1:1000 IHC 1:20
- 1:200 IF 1:10 - 1:100 IP
1:20 - 1:50

Source:

Rabbit

Isotype:

IgG

Purification:

Affinity purification

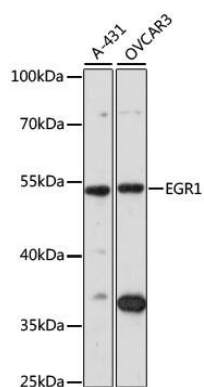
Immunogen:

Recombinant fusion protein containing a sequence corresponding to amino acids 1-250 of human EGR1 (NP_001955.1).

Storage:

Store at -20°C. Avoid freeze / thaw cycles. Buffer: PBS with 0.02% sodium azide, 50% glycerol, pH7.3.

Product Images



Western blot analysis of extracts of various cell lines, using EGR1 antibody (CAB7266) at 1:1000 dilution. Secondary antibody: HRP Goat Anti-Rabbit IgG (H+L) (CABS014) at 1:10000 dilution. Lysates/proteins: 25ug per lane. Blocking buffer: 3% nonfat dry milk in TBST. Detection: ECL Basic Kit (CABM00020). Exposure time: 90s.