

# CEBPG Rabbit Polyclonal Antibody



CAB7279

## Product Information

### Size:

20uL, 50uL, 100uL, 200uL

### Observed MW:

16kDa

### Calculated MW:

16kDa

### Applications:

WB IHC IF

### Reactivity:

Human, Mouse

## Antibody Information

### Recommended dilutions:

WB 1:500 - 1:2000 IHC 1:50  
- 1:200 IF 1:50 - 1:100

### Source:

Rabbit

### Isotype:

IgG

### Purification:

Affinity purification

## Protein Background

The C/EBP family of transcription factors regulates viral and cellular CCAAT/enhancer element-mediated transcription. C/EBP proteins contain the bZIP region, which is characterized by two motifs in the C-terminal half of the protein: a basic region involved in DNA binding and a leucine zipper motif involved in dimerization. The C/EBP family consist of several related proteins, C/EBP alpha, C/EBP beta, C/EBP gamma, and C/EBP delta, that form homodimers and that form heterodimers with each other. CCAAT/enhancer binding protein gamma may cooperate with Fos to bind PRE-I enhancer elements. Two transcript variants encoding the same protein have been found for this gene.

## Immunogen information

### Gene ID:

1054

### Uniprot

P53567

### Synonyms:

CEBPG; GPE1BP; IG/EBP-1

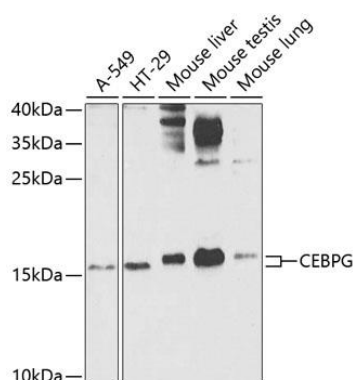
### Immunogen:

Recombinant fusion protein containing a sequence corresponding to amino acids 1-150 of human CEBPG (NP\_001797.1).

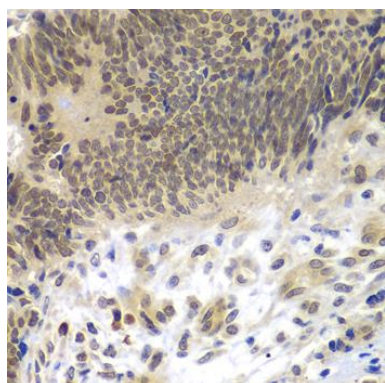
### Storage:

Store at -20°C. Avoid freeze / thaw cycles. Buffer: PBS with 0.02% sodium azide, 50% glycerol, pH7.3.

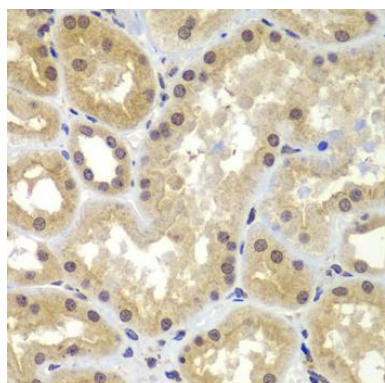
## Product Images



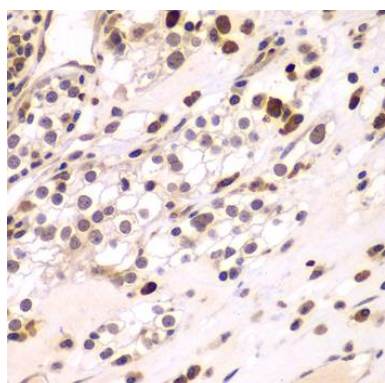
Western blot analysis of extracts of various cell lines, using CEBPG antibody (CAB7279) at 1:1000 dilution. Secondary antibody: HRP Goat Anti-Rabbit IgG (H+L) (CABS014) at 1:10000 dilution. Lysates/proteins: 25ug per lane. Blocking buffer: 3% nonfat dry milk in TBST. Detection: ECL Enhanced Kit (CABM00021). Exposure time: 90s.



Immunohistochemistry of paraffin-embedded human colon carcinoma using CEBPG antibody (CAB7279) at dilution of 1:100 (40x lens).



Immunohistochemistry of paraffin-embedded human kidney using CEBPG antibody (CAB7279) at dilution of 1:100 (40x lens).



Immunohistochemistry of paraffin-embedded human kidney cancer using CEBPG antibody (CAB7279) at dilution of 1:100 (40x lens).