

DCD Rabbit Polyclonal Antibody



CAB7280

Product Information

Size:

20uL, 50uL, 100uL, 200uL

Observed MW:

11kDa

Calculated MW:

8kDa/11kDa/12kDa

Applications:

WB IF

Reactivity:

Human, Mouse

Protein Background

This antimicrobial gene encodes a secreted protein that is subsequently processed into mature peptides of distinct biological activities. The C-terminal peptide is constitutively expressed in sweat and has antibacterial and antifungal activities. The N-terminal peptide, also known as diffusible survival evasion peptide, promotes neural cell survival under conditions of severe oxidative stress. A glycosylated form of the N-terminal peptide may be associated with cachexia (muscle wasting) in cancer patients. Alternative splicing results in multiple transcript variants encoding different isoforms.

Immunogen information

Gene ID:

117159

Uniprot

P81605

Synonyms:

DCD; AIDD; DCD-1; DSEP; HCAP; PIF; dermcidin

Antibody Information

Recommended dilutions:

WB 1:500 - 1:2000 IF 1:50 - 1:100

Source:

Rabbit

Isotype:

IgG

Purification:

Affinity purification

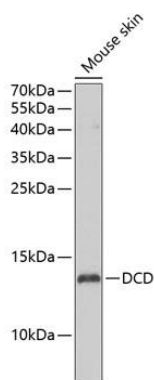
Immunogen:

Recombinant fusion protein containing a sequence corresponding to amino acids 20-110 of human DCD (NP_444513.1).

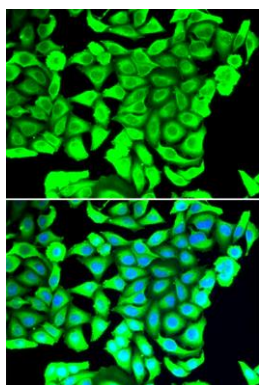
Storage:

Store at -20°C. Avoid freeze / thaw cycles. Buffer: PBS with 0.02% sodium azide, 50% glycerol, pH7.3.

Product Images



Western blot analysis of extracts of mouse skin, using DCD antibody (CAB7280) at 1:1000 dilution. Secondary antibody: HRP Goat Anti-Rabbit IgG (H+L) (CABS014) at 1:10000 dilution. Lysates/proteins: 25ug per lane. Blocking buffer: 3% nonfat dry milk in TBST. Detection: ECL Enhanced Kit (CABM00021). Exposure time: 5s.



Immunofluorescence analysis of MCF-7 cells using DCD antibody (CAB7280). Blue: DAPI for nuclear staining.