

# [KO Validated] ING5 Rabbit Polyclonal Antibody



CAB7288

## Product Information

### Size:

20uL, 50uL, 100uL, 200uL

### Observed MW:

30KDa

### Calculated MW:

25kDa/27kDa

### Applications:

WB IF

### Reactivity:

Human

## Protein Background

This gene encodes a tumor suppressor protein that inhibits cell growth and induces apoptosis. This protein contains a PHD-type zinc finger. It interacts with tumor suppressor p53 and p300, a component of the histone acetyl transferase complex, suggesting a role in transcriptional regulation. Alternative splicing and the use of multiple promoters and 3' ends results in multiple transcript variants.

## Immunogen information

### Gene ID:

84289

### Uniprot

Q8WYH8

### Synonyms:

ING5; p28ING5

## Antibody Information

### Recommended dilutions:

WB 1:500 - 1:2000 IF 1:50 - 1:100

### Source:

Rabbit

### Isotype:

IgG

### Purification:

Affinity purification

### Immunogen:

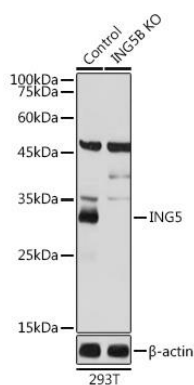
Recombinant fusion protein containing a sequence corresponding to amino acids 1-220 of human ING5 (NP\_115705.2).

### Storage:

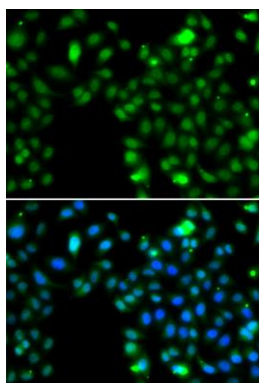
Store at -20°C. Avoid freeze / thaw cycles. Buffer: PBS with 0.02% sodium azide, 50% glycerol, pH7.3.

## Product Images

---



Western blot analysis of extracts of 293T cells, using ING5 antibody (CAB7288) at 1:1000 dilution. Secondary antibody: HRP Goat Anti-Rabbit IgG (H+L) (CABS014) at 1:10000 dilution. Lysates/proteins: 25ug per lane. Blocking buffer: 3% nonfat dry milk in TBST. Detection: ECL Basic Kit (CABM00020). Exposure time: 1s.



Immunofluorescence analysis of MCF-7 cells using ING5 antibody (CAB7288). Blue: DAPI for nuclear staining.