

# [KO Validated] L3MBTL3 Rabbit Polyclonal Antibody

## CAB7289



### Product Information

**Size:**

20uL, 50uL, 100uL, 200uL

**Observed MW:**

100kDa

**Calculated MW:**

85kDa/88kDa

**Applications:**

WB IF IP

**Reactivity:**

Human, Mouse

### Protein Background

This gene encodes a member of the malignant brain tumor (MBT) family of chromatin interacting transcriptional repressors. Members of this family function as methyl-lysine readers, which recognize methylated lysine residues on histone protein tails, and are associated with the repression of gene expression. The encoded protein may regulate hematopoiesis. Homozygous deletion of this gene has been observed in human patients with medulloblastoma. [provided by RefSeq, Oct 2016]

### Immunogen information

**Gene ID:**

84456

**Uniprot**

Q96JM7

**Synonyms:**

L3MBTL3; MBT-1; MBT1

### Antibody Information

**Recommended dilutions:**

WB 1:500 - 1:2000 IF 1:50 - 1:100 IP 1:50 - 1:200

**Source:**

Rabbit

**Isotype:**

IgG

**Purification:**

Affinity purification

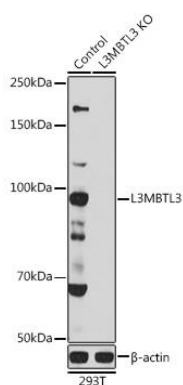
**Immunogen:**

Recombinant fusion protein containing a sequence corresponding to amino acids 1-230 of human L3MBTL3 (NP\_001007103.1).

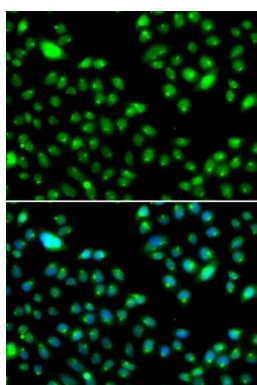
**Storage:**

Store at -20°C. Avoid freeze / thaw cycles. Buffer: PBS with 0.02% sodium azide, 50% glycerol, pH7.3.

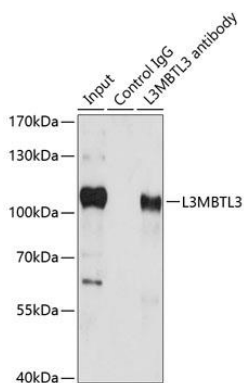
## Product Images



Western blot analysis of extracts of 293T cells, using L3MBTL3 antibody (CAB7289) at 1:1000 dilution. Secondary antibody: HRP Goat Anti-Rabbit IgG (H+L) (CABS014) at 1:10000 dilution. Lysates/proteins: 25ug per lane. Blocking buffer: 3% nonfat dry milk in TBST. Detection: ECL Basic Kit (CABM00020). Exposure time: 10s.



Immunofluorescence analysis of MCF-7 cells using L3MBTL3 antibody (CAB7289). Blue: DAPI for nuclear staining.



Immunoprecipitation analysis of 200ug extracts of HeLa cells using 1ug L3MBTL3 antibody (CAB7289). Western blot was performed from the immunoprecipitate using L3MBTL3 antibody (CAB7289) at a dilution of 1:1000.