

METTL2A Rabbit Polyclonal Antibody



CAB7290

Product Information

Size:

20uL, 50uL, 100uL, 200uL

Observed MW:

Refer to figures

Calculated MW:

27kDa/43kDa

Applications:

WB IF

Reactivity:

Human

Antibody Information

Recommended dilutions:

WB 1:500 - 1:2000 IF 1:50 - 1:100

Source:

Rabbit

Isotype:

IgG

Purification:

Affinity purification

Protein Background

Immunogen information

Gene ID:

339175

Uniprot

Q96IZ6

Synonyms:

METTL2A; METTL2

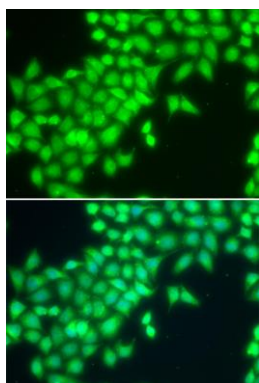
Immunogen:

Recombinant fusion protein containing a sequence corresponding to amino acids 139-378 of human METTL2A (NP_859076.3).

Storage:

Store at -20°C. Avoid freeze / thaw cycles. Buffer: PBS with 0.02% sodium azide, 50% glycerol, pH7.3.

Product Images



Immunofluorescence analysis of MCF-7 cells using METTL2A antibody (CAB7290). Blue: DAPI for nuclear staining.