

NAT10 Rabbit Polyclonal Antibody



CAB7292

Product Information

Size:

20uL, 50uL, 100uL, 200uL

Observed MW:

116kDa

Calculated MW:

107kDa/115kDa

Applications:

WB IF

Reactivity:

Human, Rat

Protein Background

The protein encoded by this gene is an RNA cytidine acetyltransferase involved in histone acetylation, tRNA acetylation, the biosynthesis of 18S rRNA, and the enhancement of nuclear architecture and chromatin organization.

Immunogen information

Gene ID:

55226

Uniprot

Q9H0A0

Synonyms:

NAT10; ALP; NET43; Kre33

Antibody Information

Recommended dilutions:

WB 1:500 - 1:2000 IF 1:50 - 1:100

Source:

Rabbit

Isotype:

IgG

Purification:

Affinity purification

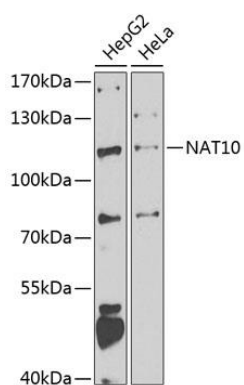
Immunogen:

Recombinant fusion protein containing a sequence corresponding to amino acids 1-250 of human NAT10 (NP_078938.2).

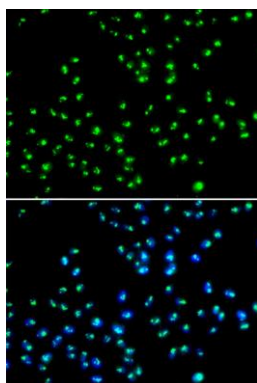
Storage:

Store at -20°C. Avoid freeze / thaw cycles. Buffer: PBS with 0.02% sodium azide, 50% glycerol, pH7.3.

Product Images



Western blot analysis of extracts of various cell lines, using NAT10 antibody (CAB7292) at 1:1000 dilution. Secondary antibody: HRP Goat Anti-Rabbit IgG (H+L) (CABS014) at 1:10000 dilution. Lysates/proteins: 25ug per lane. Blocking buffer: 3% nonfat dry milk in TBST. Detection: ECL Enhanced Kit (CABM00021). Exposure time: 90s.



Immunofluorescence analysis of MCF-7 cells using NAT10 antibody (CAB7292). Blue: DAPI for nuclear staining.