

NCBP2 Rabbit Polyclonal Antibody



CAB7293

Product Information

Size:

20uL, 50uL, 100uL, 200uL

Observed MW:

14kDa

Calculated MW:

11kDa/15kDa/18kDa

Applications:

WB IHC IF

Reactivity:

Human, Mouse

Protein Background

The product of this gene is a component of the nuclear cap-binding protein complex (CBC), which binds to the monomethylated 5' cap of nascent pre-mRNA in the nucleoplasm. The encoded protein has an RNP domain commonly found in RNA binding proteins, and contains the cap-binding activity. The CBC promotes pre-mRNA splicing, 3'-end processing, RNA nuclear export, and nonsense-mediated mRNA decay. Multiple transcript variants encoding different isoforms have been found for this gene.

Immunogen information

Gene ID:

22916

Uniprot

P52298

Synonyms:

NCBP2; CBC2; CBP20; NIP1; PIG55

Antibody Information

Recommended dilutions:

WB 1:500 - 1:2000 IHC 1:50
- 1:200 IF 1:50 - 1:100

Source:

Rabbit

Isotype:

IgG

Purification:

Affinity purification

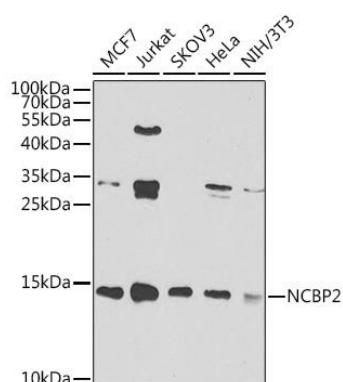
Immunogen:

Recombinant fusion protein containing a sequence corresponding to amino acids 1-156 of human NCBP2 (NP_031388.2).

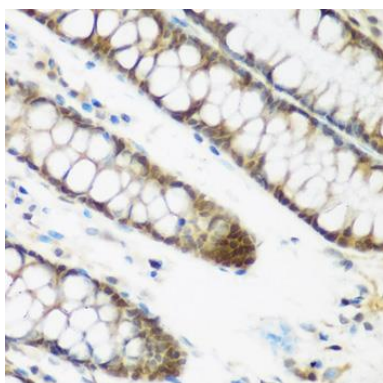
Storage:

Store at -20°C. Avoid freeze / thaw cycles. Buffer: PBS with 0.02% sodium azide, 50% glycerol, pH7.3.

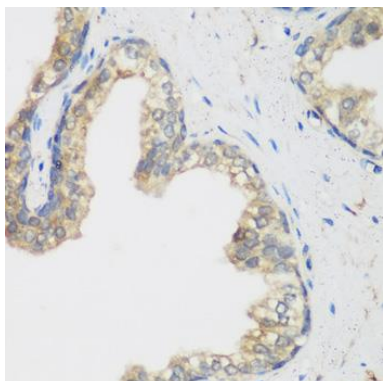
Product Images



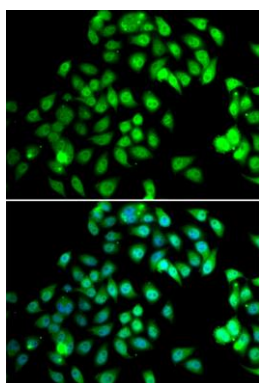
Western blot analysis of extracts of various cell lines, using NCBP2 antibody (CAB7293) at 1:1000 dilution. Secondary antibody: HRP Goat Anti-Rabbit IgG (H+L) (CABS014) at 1:10000 dilution. Lysates/proteins: 25ug per lane. Blocking buffer: 3% nonfat dry milk in TBST. Detection: ECL Basic Kit (CABM00020). Exposure time: 90s.



Immunohistochemistry of paraffin-embedded human colon using NCBP2 antibody (CAB7293) at dilution of 1:200 (40x lens).



Immunohistochemistry of paraffin-embedded human prostate using NCBP2 antibody (CAB7293) at dilution of 1:200 (40x lens).



Immunofluorescence analysis of MCF-7 cells using NCBP2 antibody (CAB7293). Blue: DAPI for nuclear staining.