

PARP3 Rabbit Polyclonal Antibody



CAB7297

Product Information

Size:

20uL, 50uL, 100uL, 200uL

Observed MW:

Refer to figures

Calculated MW:

60kDa

Applications:

WB IF

Reactivity:

Human

Antibody Information

Recommended dilutions:

WB 1:500 - 1:2000 IF 1:50 - 1:100

Source:

Rabbit

Isotype:

IgG

Purification:

Affinity purification

Protein Background

The protein encoded by this gene belongs to the PARP family. These enzymes modify nuclear proteins by poly-ADP-ribosylation, which is required for DNA repair, regulation of apoptosis, and maintenance of genomic stability. This gene encodes the poly(ADP-ribose)transferase 3, which is preferentially localized to the daughter centriole throughout the cell cycle. Alternatively spliced transcript variants encoding different isoforms have been identified.

Immunogen information

Gene ID:

10039

Uniprot

Q9Y6F1

Synonyms:

PARP3; ADPRT3; ADPRTL2; ADPRTL3; ARTD3; IRT1; PADPRT-3

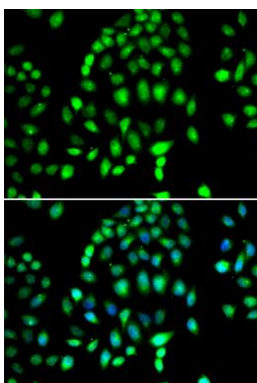
Immunogen:

Recombinant fusion protein containing a sequence corresponding to amino acids 301-540 of human PARP3 (NP_001003931.3).

Storage:

Store at -20°C. Avoid freeze / thaw cycles. Buffer: PBS with 0.02% sodium azide, 50% glycerol, pH7.3.

Product Images



Immunofluorescence analysis of MCF-7 cells using PARP3 antibody (CAB7297). Blue: DAPI for nuclear staining.